

USER MANUAL

Karaoke CD+G Creator

© 2022 Doblon

Contents

| | |
|------------------|---|
| Chapter 1 | 1 Welcome |
| Chapter 2 | 1 Tutorials |
| | 2 Create CD+G song with PowerWizard |
| | 11 Import an existing CD+G file |
| | 12 Import MIDI karaoke |
| | 15 Create song with duets |
| Chapter 3 | 19 Getting started |
| | 19 User interface |
| | 20 Soundtrack panel |
| | 23 Shortcut bar |
| | 23 Lyrics editor |
| | 24 Entering lyrics |
| | 24 Import lyrics from the text file |
| | 24 Import lyrics from CD+G file |
| | 25 Import lyrics from MIDI Karaoke file |
| | 25 Paste lyrics |
| | 26 Search for lyrics |
| | 26 Working with soundtracks |
| | 27 Playback controls |
| | 27 Synchronizing lyrics |
| | 28 Modifying synchronization using soundtrack panel |
| | 29 Adjust current word dialog box |
| | 30 Shift Labels |
| | 30 Creating CD+G files |
| | 31 Using CD+G Preview window |
| | 31 Using styles |
| | 33 Modifying CD+G settings |
| | 36 Writing CD+G Files |
| | 37 Playing CD+G files |
| | 37 What's new |
| Chapter 4 | 38 Getting results |

Contents

| | |
|----|--|
| 38 | Removing vocals |
| 39 | Creating duets |
| 41 | Duet Wizard |
| 42 | Full duet synchronization |
| 42 | Duet settings |
| 43 | Using CD+G Events |
| 44 | Clear Screen event |
| 45 | Colors event |
| 45 | Countdown event |
| 46 | Display Image event |
| 49 | Duet event |
| 50 | Overprint image |
| 53 | Set Text Area event |
| 55 | Text Settings event |
| 56 | Images |
| 56 | Using title and credit images |
| 57 | Displaying images in the middle of the song |
| 60 | Displaying image and lyrics at the same time |
| 61 | Displaying images using styles |
| 63 | Style Editor |
| 64 | Import lyrics from CD+G file |
| 64 | Searching for MIDI karaoke on the web |
| 65 | Batch file create |
| 65 | Batch MIDI import |
| 67 | Advanced lyrics import |
| 68 | Exporting lyrics |
| 69 | Adjusting program settings |
| 70 | Automatic countdowns |
| 71 | Automatic Clear Screen insertion |
| 71 | BIN/CDG converting functions |
| 71 | Text Snippets |
| 73 | Command reference |
| 73 | File |

Chapter 5

Contents

| | | |
|-----------|----|--------------------------|
| | 74 | Edit |
| | 74 | View |
| | 74 | Play |
| | 75 | Synchronize |
| | 75 | Create |
| | 75 | Toolbox |
| | 75 | Help |
| Chapter 6 | 76 | Pro version |
| Chapter 7 | 77 | Unlocking and evaluating |

Thank you for choosing Karaoke CD+G Creator from Doblon.

Karaoke CD+G Creator is a CD+G Karaoke authoring tool. It allows to create a CD+G song from scratch or allows to import MIDI Karaoke (KAR) files.



Tutorials

[Create CD+G song with PowerWizard](#)

[Import an existing CD+G file and create your own version of the song](#)

[Create CD+G song from MIDI karaoke](#)

[Create song with duets](#) (Pro version only)

Getting started

[The user interface](#)

[Entering lyrics](#)

[Working with soundtracks](#)

[Synchronizing lyrics](#)

[Creating CD+G files](#)

[What's new](#)

Getting results

[Removing vocals](#)

[Creating duets](#)

[Using CD+G events](#)

[Images](#)

[Searching for MIDI Karaoke on the web](#)

[Batch file create](#)

[Batch MIDI import](#)

[Advanced lyrics import](#)

[Exporting lyrics](#)

[Command Reference](#)

Pro [Differences between Pro and regular versions](#)

[Unlocking and evaluating](#)

Step-by-step tutorials will guide through various tasks in Karaoke CD+G Creator:

[Create CD+G song with PowerWizard](#)

[Import an existing CD+G file and create your own version of the song](#)

[Create CD+G song from MIDI karaoke](#)

[Create song with duets](#) (Pro version only)

Create CD+G song with PowerWizard

PowerWizard will help you to create your first CD+G karaoke song with Karaoke CD+G Creator.

The song we will create is *Nobody knows you when you're down and out* by Jimmy Cox, made famous by Eric Clapton.

Starting PowerWizard

To start PowerWizard click **Create New Song Wizard** toolbar button (). PowerWizard dialog box will appear.



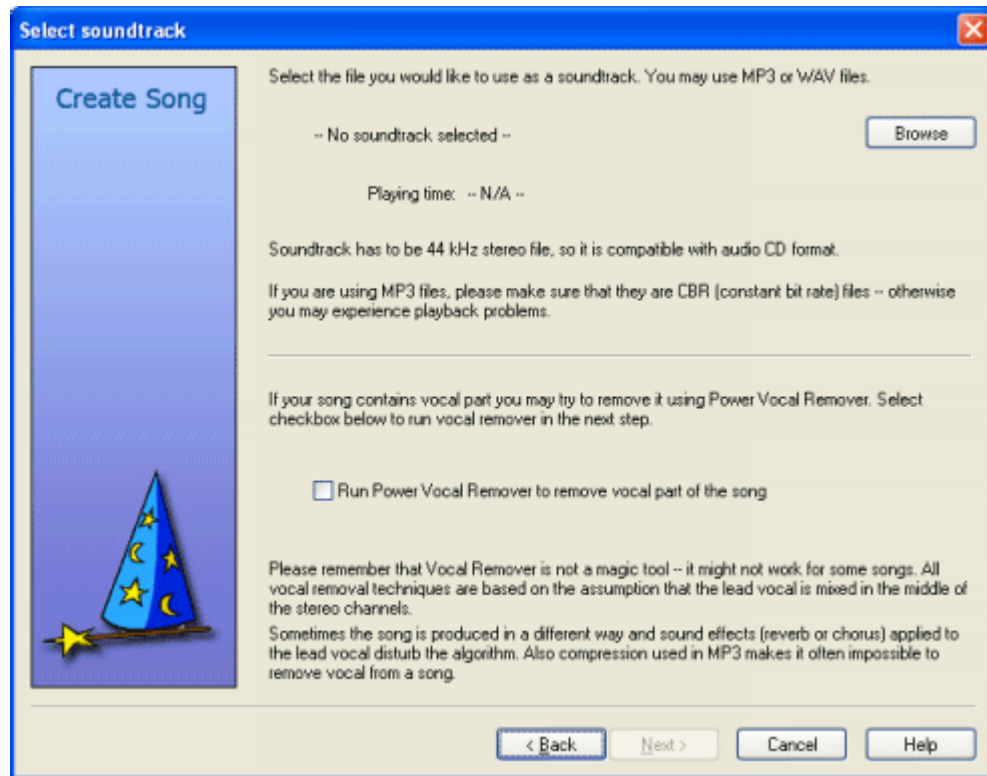
There are two automated paths that can be used with PowerWizard. The first is creating a new karaoke song from lyrics and soundtrack (this is what we are going to do now). The other one is [MIDI karaoke import](#).

By default PowerWizard is configured to run when Karaoke CD+G Creator starts. You can modify this setting with **Run this wizard on program startup** checkbox.

To proceed to the next step click **Next** button.

Soundtrack

The next step will be choosing the soundtrack to use for the song.



To load the soundtrack click **Browse** button and navigate to the following file:

`C:\Program Files\Doblon\Karaoke CD+G Creator\Examples\nobody knows you.mp3`

or

`Documents\My Karaoke\Karaoke CD+G Creator Pro Examples\nobody knows you.mp3` on Windows Vista.

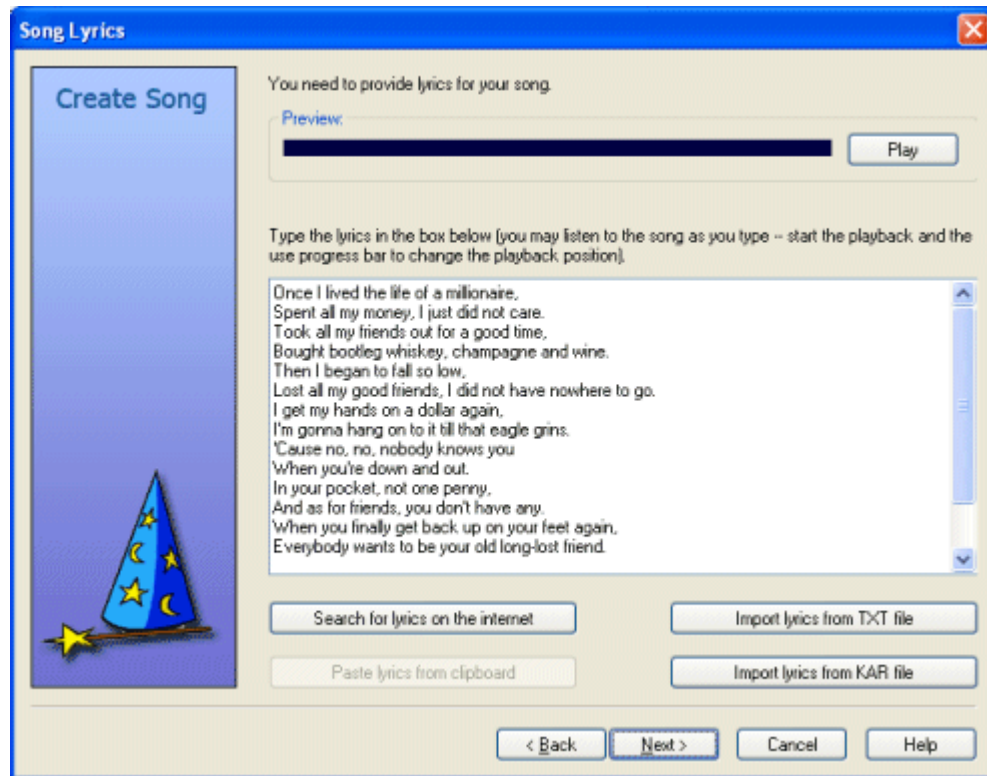
After the file is loaded its name and playback time will displayed in the wizard window. Karaoke CD+G Creator can use WAV and MP3 files as soundtracks. The soundtrack file needs to be of CD quality (44 kHz stereo).

PowerWizard allows to remove vocals from the song. Our song is an instrumental track, it does not contain vocals, so we will not use Power Vocal Remover. More information on removing vocals can be found in [Removing vocals](#) section.

To proceed to the next step click **Next** button.

Lyrics

Now it is time to provide lyrics for the song.



There are several ways to add lyrics to the song. You may:

- type lyrics in (you may listen to the song as you type -- use **Play** button to control the playback)
- use web search for lyrics; Karaoke CD+G Creator automatically opens browser window and runs search using provided details (song title and artist name); more on lyrics search can be found in section Search for lyrics on the web
- paste lyrics from the clipboard (you may select the lyrics in web browser or text editor, copy it, and then paste it into Karaoke CD+G Creator)
- import lyrics from the text file

In this tutorial we will import the lyrics from the text file. Click **Import lyrics from TXT file** and open the following file:

```
C:\Program Files\Doblon\Karaoke CD+G Creator\Examples\nobody knows you.txt
```

or

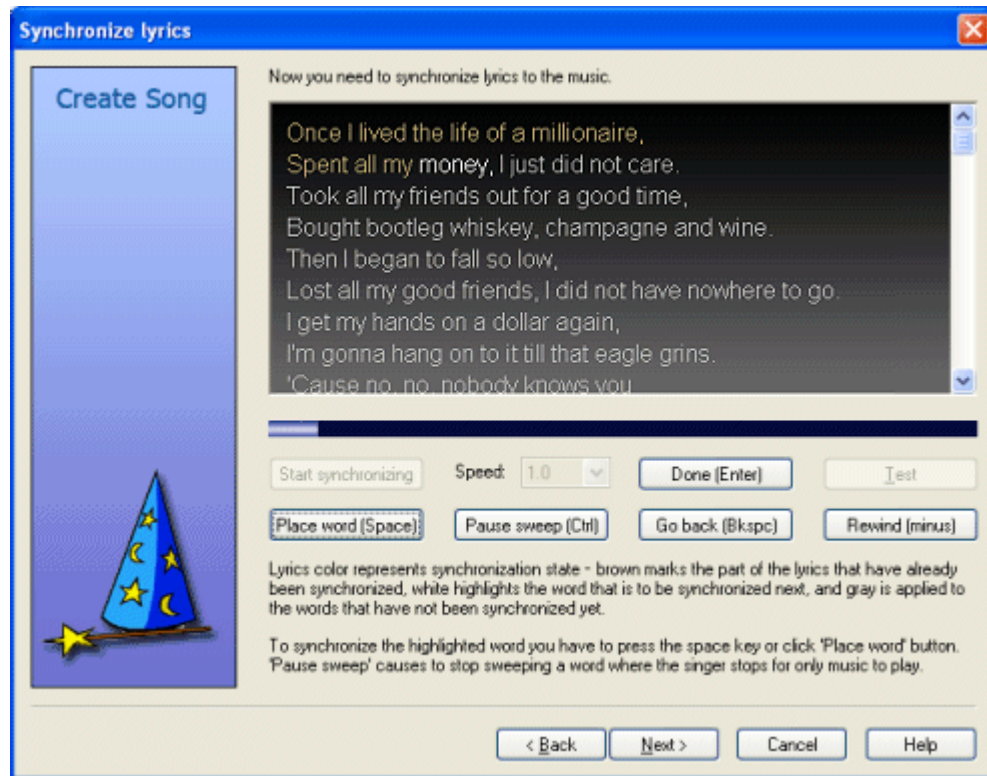
```
Documents\My Karaoke\Karaoke CD+G Creator Pro Examples\nobody knows you.txt on Windows Vista.
```

The lyrics will be displayed -- you may edit them if necessary.

To proceed to the next step click **Next** button.

Synchronizing lyrics

This step is the most difficult in the whole process of karaoke song creation. You have to synchronize the lyrics to the music.



During synchronization process Karaoke CD+G Creator highlights words one by one, and your task is to tap the space bar at the moment the word is sung. It is not simple and takes some experience to achieve. To start synchronizing press **Start synchronizing** button. The first word in the song will become highlighted and the song will start to play.

When the song reaches the highlighted word, press `Space` key on your keyboard. The highlighting will move to the next word and so on. To mark the end of the word (usually before the long instrumental break) press `Ctrl` key. When you are done (ie. all words have been synchronized press `Enter` key or click **Done** button).

Now you need to check how good job have you done. To do this click **Test** button and see if the words highlight correctly during playback. Please note that if you have not done perfect job you may adjust synchronization later (see Adjusting synchronization section).

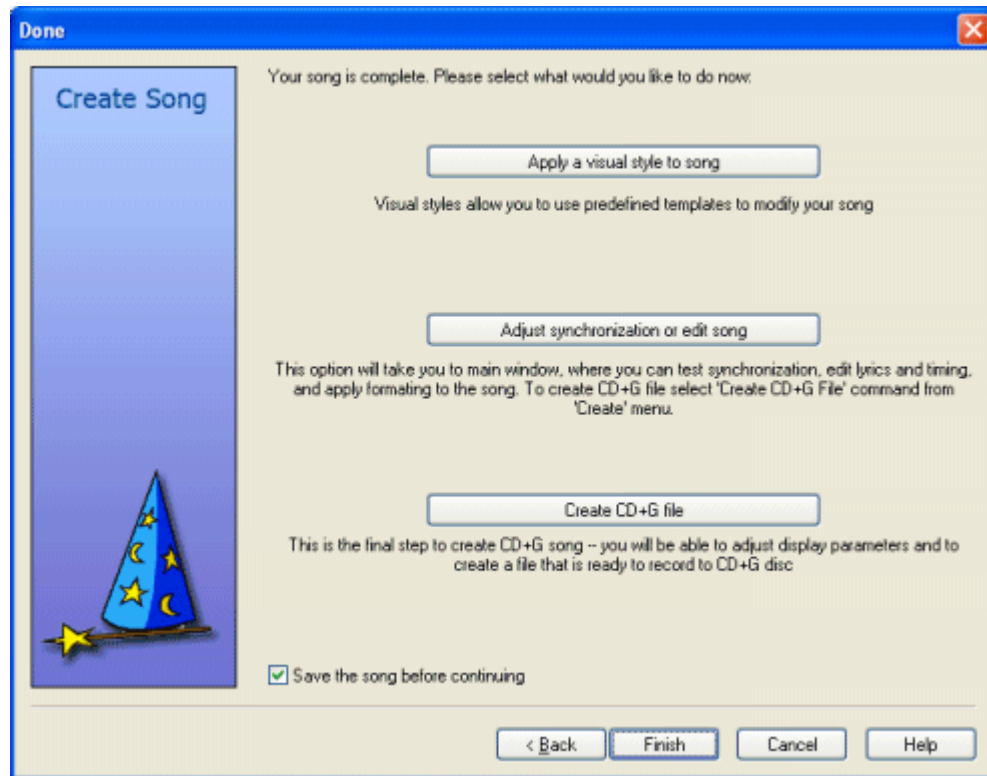
As you have probably noticed synchronizing lyrics is not an easy task. Here are hints that can make your life easier:

- use speed control to decrease the playback speed; if you select 0.5 the playback will be two times slower
- use **Go Back** button if you miss the beat; **Rewind** buttons rewinds the playback, but does not move highlighting
- if you are working on a new song, synchronize it from start till end, and then do it once more; second pass will be much better
- see **Advanced synchronization** for for synchronization tips

To proceed to the next step click **Next** button.

Wizard is done

The wizard is complete -- most of the work is done.



You are left with three choices now. You may:

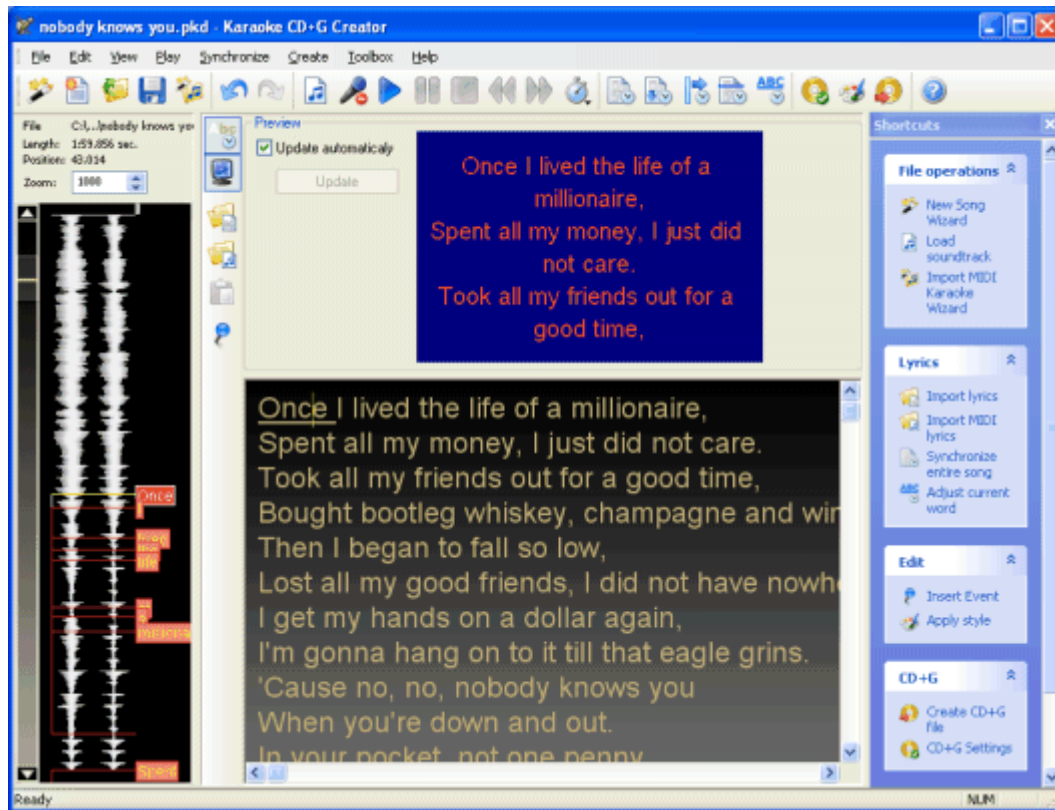
- Apply a visual style to the song -- this button will open **Styles** dialog that will allow you to use one of song templates
- Adjust synchronization or edit the song -- choosing this option will let you to fine tune the song, edit lyrics, or fix synchronization errors
- Create CD+G file will take you directly to CD+G file creation

To continue with this tutorial click **Adjust synchronization or edit song** button.

If **Save the song before continuing** is checked, you will be prompted to save the song. Karaoke CD+G Creator saves song in PK2 files. Note that saving files is disabled in demo mode.

Karaoke CD+G Creator main window

Now it is a good time to learn about the main window of Karaoke CD+G Creator.



On the top you see common Windows interface items -- menu bar and toolbar.

Left side of the window is occupied by the **soundtrack panel**. It displays a waveform of the current soundtrack, and on top of it labels that correspond to the synchronized words. More information on using it can be found in [Using the soundtrack panel](#) section.

Right side of the window contains the **shortcut bar**. It contains shortcuts to most frequently used commands. Shortcut bar changes with context -- if you do not need it any more you may close (to display it again use **Shortcut bar** command from **View** menu). To leave the shortcut bar visible, but to disable animations, select **Preferences** from **File** menu and uncheck **Animate shortcut bar** option.

The main area of the screen is taken by the lyrics editor. It consists of two parts -- preview window on the top (you may close it with **Preview** toolbar button ) and lyrics area below.

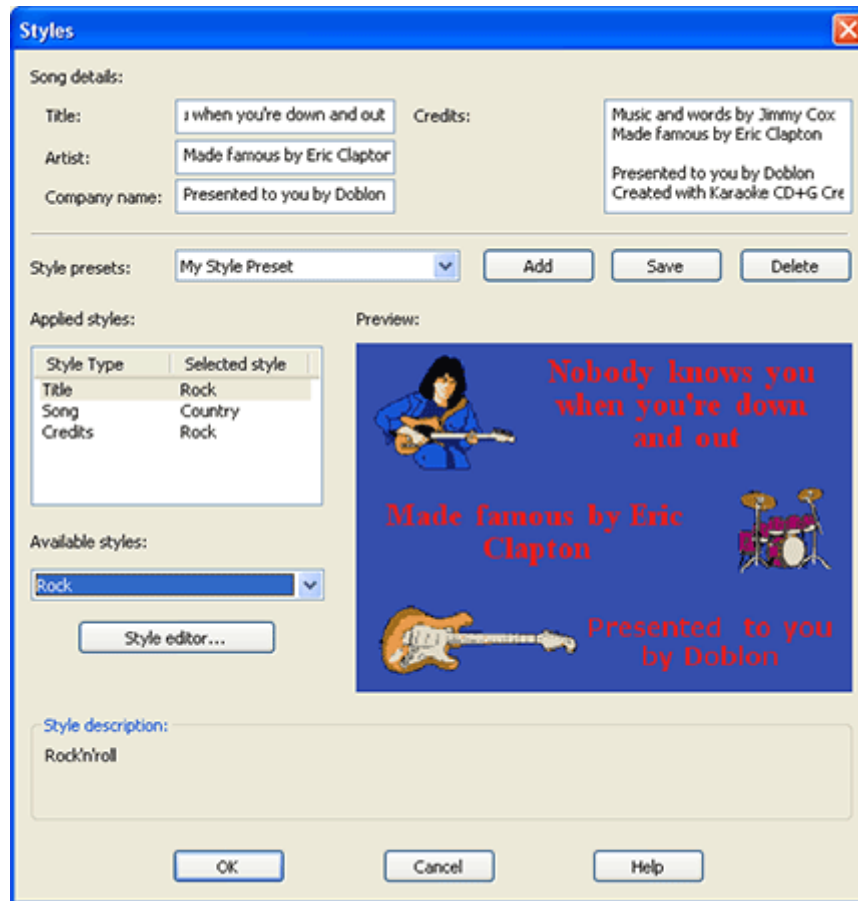
Preview window displays the CD+G preview of the current part of the lyrics -- this is how your song will look on the TV screen. If your computer is slow, rendering preview may take a long time and your work will be uncomfortable. To avoid this either hide the preview window or disable automatic updates (clicking **Update** button will render the preview at the current cursor position).

Lyrics area allows to edit the lyrics text, insert CD+G events, and adjust synchronization of the words.

Styles

Now it would be a good time to make our song look better. We will do this using style templates.

To apply a predefined visual style to your song click **Styles** button on the toolbar () or select **Styles** command from **Create** menu.



Song details section of the dialog box allows you to enter title of the song, artist name, and text that will be displayed as your company information (probably something like *Presented to you by DOBLON*). Credits are displayed after the song is finished.

***Tip:** To force a new line in Title, Artist, or Company name fields, use ^ character.*

What is style?

Karaoke CD+G Creator allows to set styles for:

- **Title:** image displayed before the song
- **Credits:** image displayed after the song is finished
- **Song:** colors, text formatting, page layout, and image (in Pro version only) of the lyrics

Each of this styles can be applied individually, or it is possible to use presets.

Style preset combo box allows to select one of predefined templates. It will change all styles in **Applied styles**. You may store your combination of Title, Song, and Credit styles using **Add** button. To save changed combination use **Save** button. **Delete** button removes your preset from the list.

Applied styles lists styles used for each of the sections of the song. To change the style select it in **Applied styles** list and then choose the new style from **Available styles** combo. Selecting **(Unused)** will disable the style.


Style editor button starts [Style Editor dialog box](#) which allows you to create your own styles.

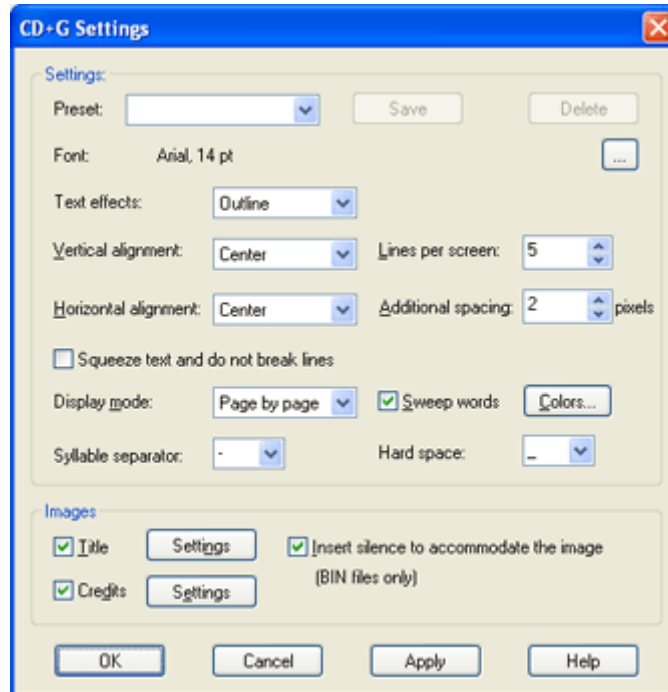
Preview window displays the preview of the style selected in **Applied styles** list.

Selected styles will be applied to the song when you select **OK** button.

To continue with the tutorial select **Rock** style preset and click **OK** button.

Adjust CD+G Parameters

Usually you will want to adjust CD+G parameters to your liking. To open **CD+G Settings** dialog box click **CD+G Settings** button on the toolbar () or select **CD+G Settings** command from **Create** menu.




Try changing the font and click **Apply** button. In the preview window of lyrics editor you will see the result of the changes you have made (you may have to move CD+G Settings dialog to show preview window beneath it).

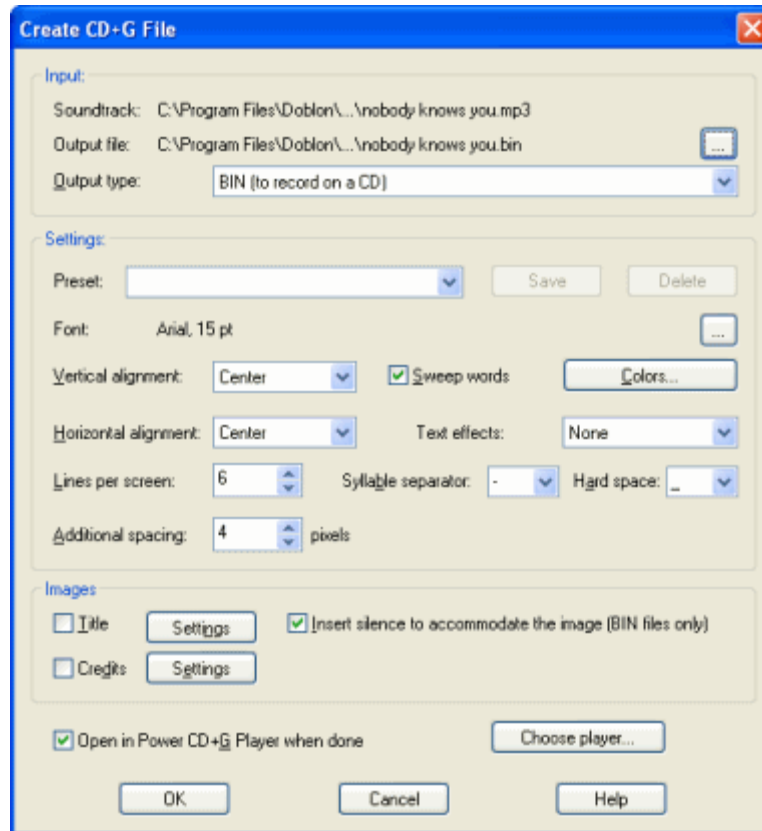
To learn more about CD+G Settings dialog box see [Modifying CD+G settings](#) section.

When you are satisfied with the way text looks click **OK**.

Create CD+G File

Now we are ready to create CD+G file.

Click **Create CD+G File** button on the toolbar () or select **Create CD+G File** command from **Create** menu. You may also press **F2** key on the keyboard.



If you want to write this track to a CD, you need to select **BIN** as the output type. Selecting **CDG** output type will allow you to preview the result in Power CD+G Player. By default the output file is created in the same directory as the soundtrack file. Make sure that you have all necessary user privileges, or change the output file location.

Please note that most of the settings is the same as those in [CD+G Settings dialog box](#).

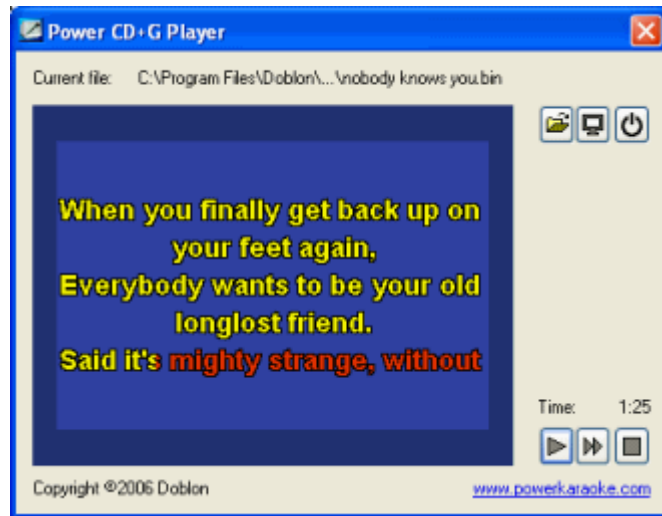
If you would like to preview the output file, make sure that **Open in Power CD+G Player when done** option is checked. You may select a different software CD+G player if you have one -- use **Choose player** button to do this.

Tip: If Power CD+G Player Pro is installed on your computer, you will be prompted to use it as a default CD+G player in Karaoke CD+G Creator.
[Click here to visit Power CD+G Player Pro website.](#)

Now click **OK** to create CD+G file.

Play CD+G song with Power CD+G Player

Power CD+G Player can be used to play the tracks you create with Karaoke CD+G Creator.



It is a good idea to view the song in full before burning it to the CD.

Burn CD+G disc

Karaoke CD+G Creator does not burn CD+G discs. To do this you need Power CD+G Burner. [To learn more visit Power CD+G Burner website.](#)

Import an existing CD+G file

One of the most exciting features of Karaoke CD+G Creator is an ability to import existing CD+G songs. This allows to re-edit commercial editions of karaoke songs with endless possibilities -- use this to change font and images, fix broken characters, change lyrics or create parodies. Karaoke CD+G Creator imports both lyrics and synchronization, so the most cumbersome part of the song creation is already done, leaving you all the fun.

To import CD+G song select **Import CD+G File** command from **File** menu or click **Import CD+G File** button on the toolbar.

First you need to select file containing CD+G songs. Two file formats are supported -- CDG BIN file. If you use CDG file, Karaoke CD+G Creator will automatically look for MP3 file of the same name and use it as a soundtrack.

If **Insert 'Clear Screen' events automatically** is checked, Karaoke CD+G Creator will detect when entire screen is erased in CD+G song and will insert 'Clear Screen' events at the same places in the imported song. This help to maintain the text flow for page-by-page songs (SoundChoice songs give very good results with this option enabled).

Import process takes a while (up to half a minute on a slower computer). Once it is completed you will see the imported lyrics in the lyrics editor. Please check for spelling mistakes, as some of the characters may be recognized incorrectly.

NOTE:

- 1. Not every song can be imported. Duets are not supported, also songs using scrolling will not import.*
 - 2. Optical character recognition (OCR) is not perfect and may sometimes make an error. Please check the lyrics for spelling mistakes.*
-

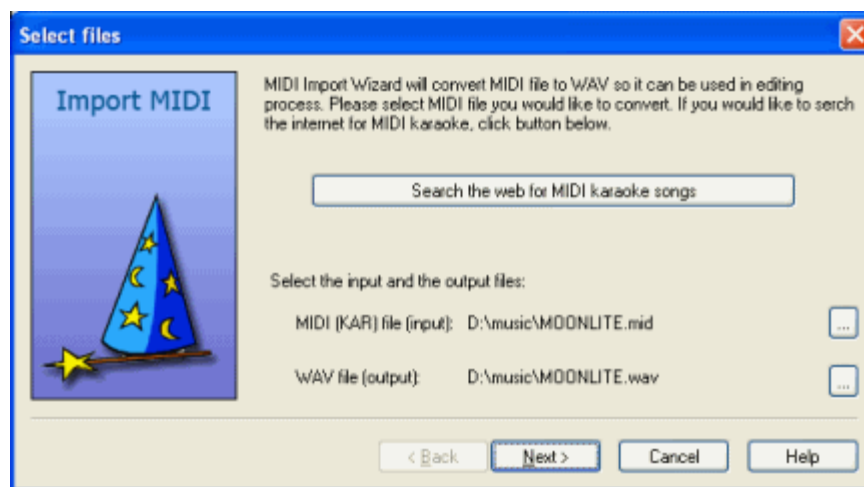
Import MIDI karaoke

MIDI files are ideally suited for karaoke -- they do not contain vocals, and they can be easily found on the internet. And a lot of them contain synchronized lyrics. The most common file extension for MIDI Karaoke files is **KAR**, but many **MID** files also contain lyrics.

Karaoke CD+G Creator has Import MIDI Karaoke Wizard that will assist you in process of converting MIDI karaoke to CD+G.

To start Import MIDI Karaoke Wizard click **Import MIDI Karaoke Wizard** toolbar button () or select **Import MIDI Karaoke Wizard** command from **File** menu.

Select files



You have to provide the input KAR file -- use [...] button next to input file to locate the file you would like to convert.

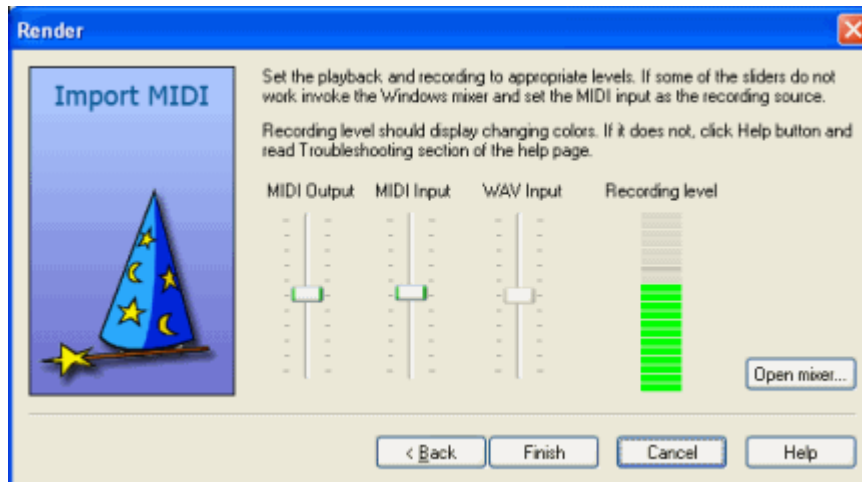
Karaoke CD+G Creator can help you to find MIDI Karaoke songs on the Internet -- click **Search the web for MIDI karaoke songs** button. You can learn more about searching for MIDI karaoke on the web in [Search for MIDI karaoke on the web](#) section.

Karaoke CD+G Creator need to record MIDI as WAV file. By default this file will be created in the same directory as the source KAR file. Use [...] next to output file to modify this directory if necessary.

When you have selected the source KAR file click **Next** button.

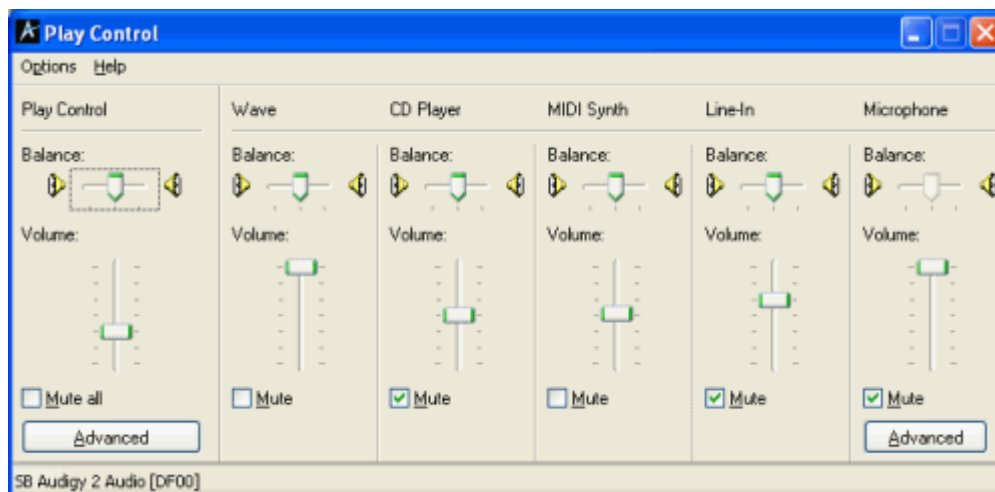
Rendering

Karaoke CD+G Creator need to record MIDI output as WAV input.



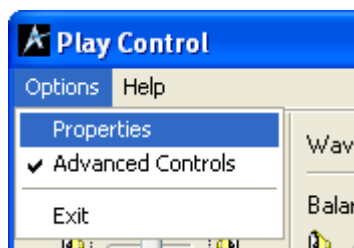
Karaoke CD+G Creator will start MIDI file playback. If everything is configured correctly you should hear the music and see green and red bar moving in **Recording level** control.

Some soundcards do not expose appropriate inputs to Karaoke CD+G Creator. If sliders are grayed out and **Recording level** control does not display anything you need to adjust MIDI recording input manually. To do this click **Open mixer** button. Windows sound mixer will appear.

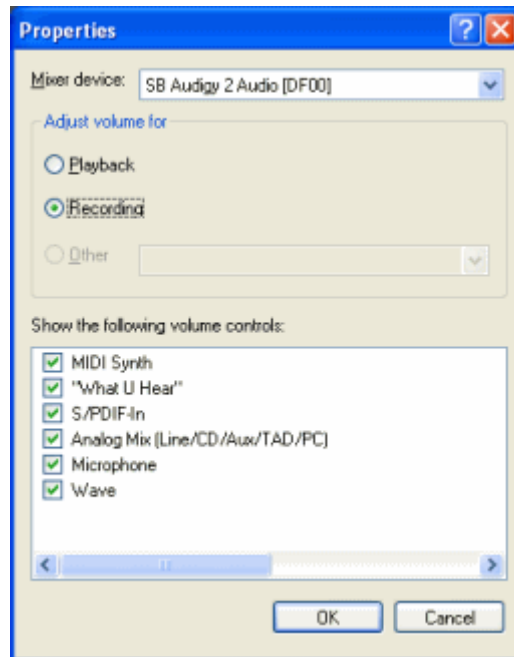


First you will have to modify playback settings. Note that the title says **Play Control**. Make sure that MIDI is not muted.

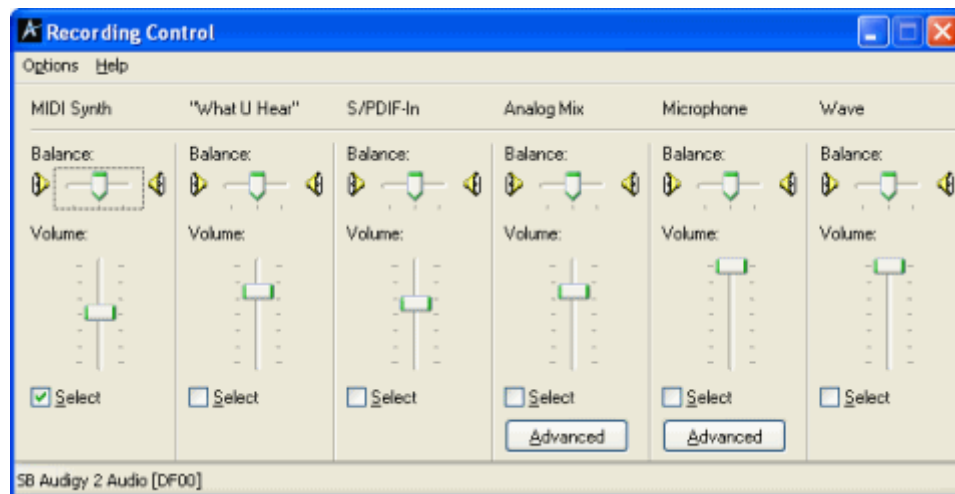
Now it is time to modify recording settings. To do this select **Properties** command from **Options** menu.



Properties dialog box will appear.



Under **Adjust volume for** change mode from **Playback** to **Recording**. Make sure that MIDI input is selected in **Show the following volume controls** list. Click **OK** to return to **Recording Properties**.



Now make sure that MIDI is selected as an active input and return to Karaoke CD+G Creator. **Recording level** control in Import MIDI Karaoke Wizard should become active.

Unfortunately some soundcards do not allow MIDI to WAV recording. If you are unable to enable MIDI recording you might try to connect the output of the soundcard to the input with a piece of wire (usually two mini-jacks wire should do). It should not degrade the sound too much. You may also try to use [software MIDI synthesizer](#). In case of doubt please [contact Karaoke CD+G Creator support](#).

When everything is set up correctly click **Finish**.

Recording

Karaoke CD+G Creator now records MIDI to WAV file. It will take exactly the same time as needed to play the MIDI file.

Lyrics import

After importing audio it is time to import lyrics. Karaoke CD+G Creator will do this automatically. If there are any problems with import you will be displayed an appropriate message.

Done

You have successfully imported MIDI karaoke file. You have soundtrack and synchronized lyrics, so you may [follow next steps as described in Create CD+G Song tutorial](#).

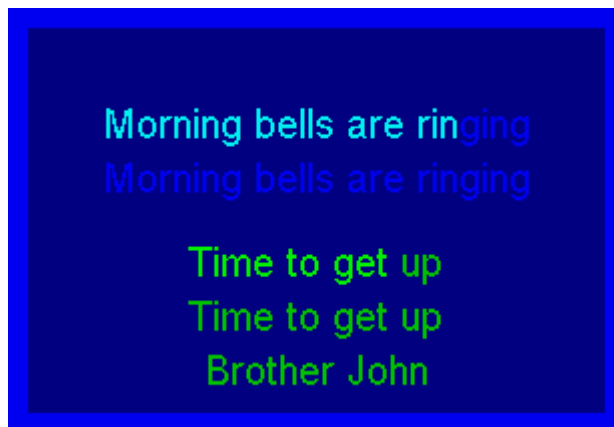
Create song with duets

Pro *Note: This tutorial refers to Pro version only.*

Karaoke CD+G Creator Pro gives you the tools to create professional duets. Most important duet features are:


- Duet Wizard that helps to assign lyrics to singers
- Full Duet synchronization mode
- Divided CD+G screen for duets (Singer 1 at top and Singer 2 at the bottom of the screen)



In this tutorial we will show you how to create a song that can be sing by two singers, each of them singing different words at the same time.



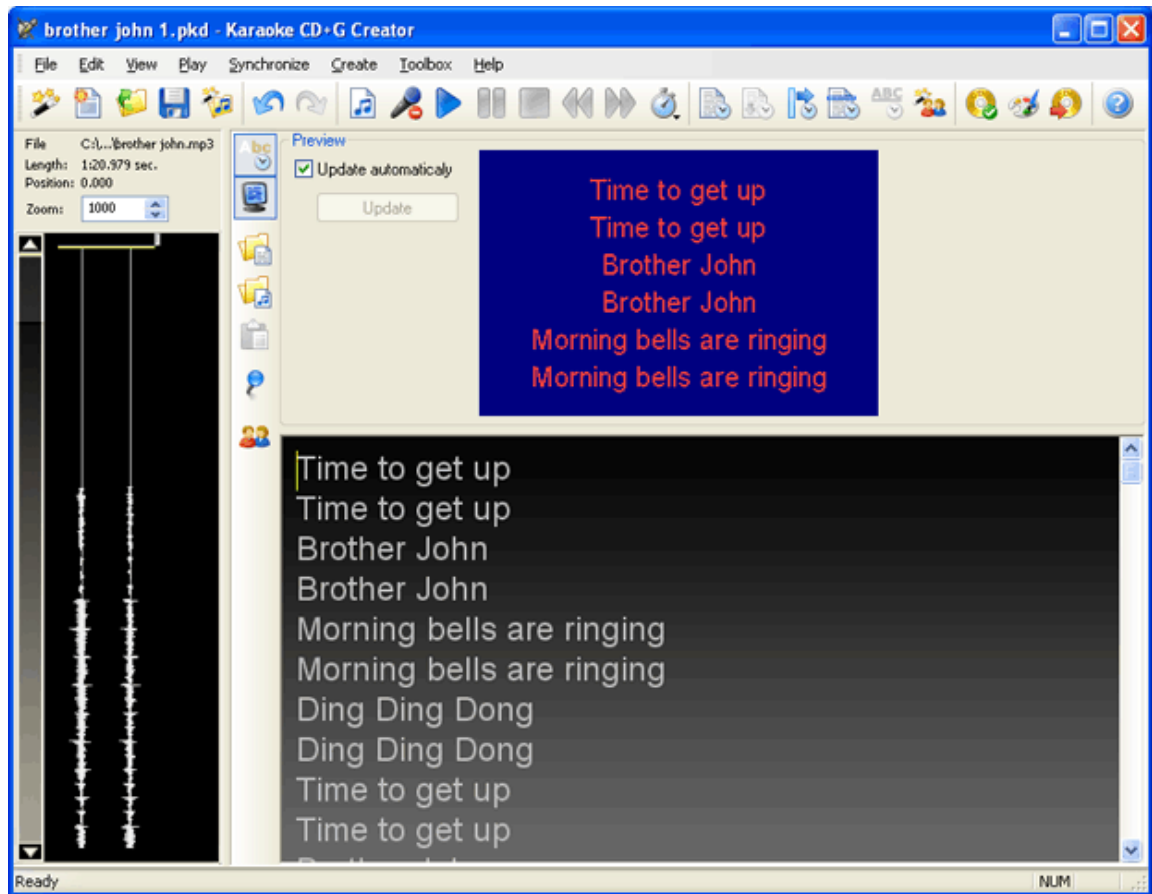
To understand this tutorial you need to be familiar with creating songs with Karaoke CD+G Creator, so if you are just starting please see [Create CD+G song with PowerWizard](#) tutorial first.

Starting up

In this tutorial we will use a traditional song **Brother John**. Soundtrack and lyrics can be found in Examples subdirectory of Karaoke CD+G Creator directory (usually C:\Program Files\Doblon\Karaoke CD+G Creator Pro Or Documents\My Karaoke\Karaoke CD+G Creator Pro Examples on Windows Vista.). Please create a new song by clicking on **New** button on the toolbar () or selecting **New** command from **File** menu. If you are using PowerWizard, select **Create a new song from scratch (without PowerWizard)** on the first wizard screen.


Now load the soundtrack using **Load soundtrack** button on the toolbar (). The soundtrack file is brother_john.mp3. Then load the lyrics from the text file -- use **Import lyrics** toolbar button () or

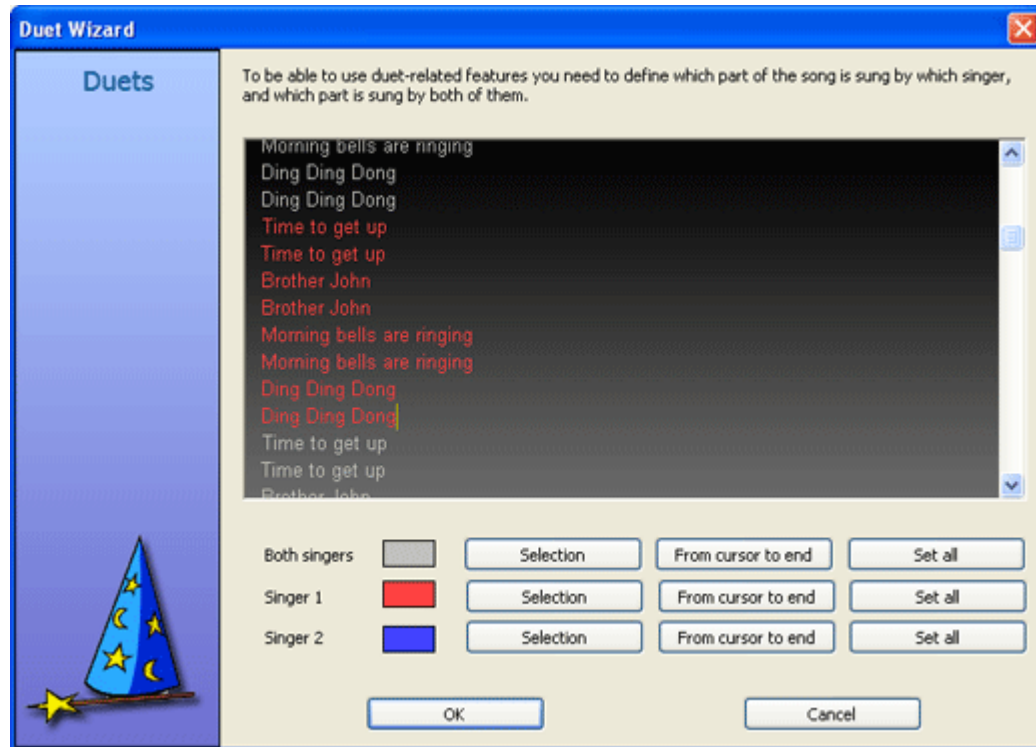
Import lyrics from a text file command from **File** menu. Lyrics file is `brother john.txt`. You may save the first version of the song at this point.



Defining duets

The next step is to assign portions of the lyrics to each of the singers. As you have probably noticed the song lyrics consists of 5 repeated verses, while the music contains the same verse 4 times only. We will start with both singers singing the first verse together, then Singer 1 will sing two verses with Singer 2 joining in, but half of the verse later. And the last verse will be sung together by both.

To assign lyrics to singers we will use **Duet Wizard**. To start it click **Duet Wizard** button on the toolbar () or select **Duet Wizard** from **Edit** menu.

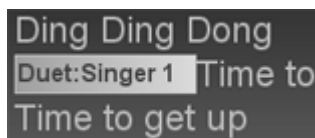


To assign a part of the lyrics to particular singer (or to both singers) select this part in the lyrics window (drag mouse to select the text) and then click **Selection** button next to the singer mode you want to use. Duet Wizard always uses full lines, so if you position the cursor in the middle of the line and then click **Selection**, entire line will be assigned.

Lyrics assigned to Singer 1 are red, lyrics assigned to Singer 2 are blue, and those that should be sung together are grey.

To continue with this tutorial please assign first verse to **Both singers**, two next to **Singer 1**, fourth to **Singer 2**, and the last one to **Both singers** again. If you are having problems with this you may close Duet Wizard with OK, open `brother_john_2.pk2` file from Examples directory, and select Duet Wizard again to see how the lyrics should be colored.

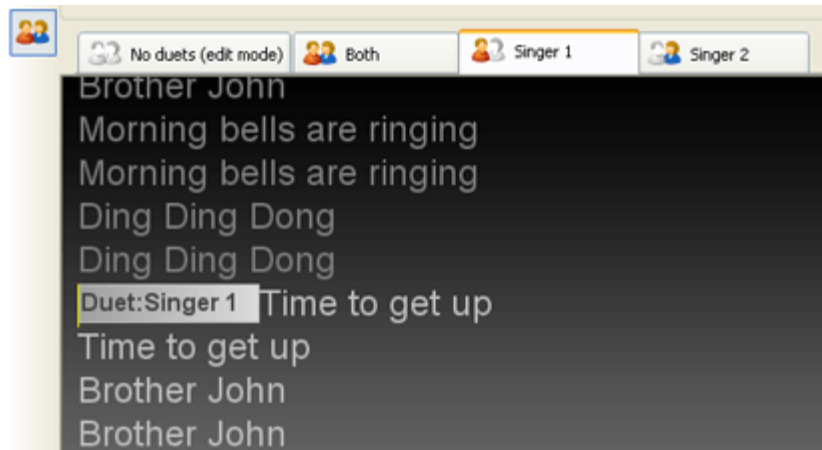
After you close Duet Wizard with OK you will see that Duet events have been inserted in the text of the song.



Each of these events represent the change of the singer -- all text after 'Duet:Singer 1' is assigned to Singer 1, until another Duet event is reached. If you position the cursor behind the first duet event you will see that text for Singer 1 is painted in blue.

Synchronization

Now it is time to synchronize the lyrics. To do this we need to enter full duet mode. To do this click **Full duet mode** button on the toolbar (👤👤) or select **Enable full duet mode** from **Synchronize** menu. Duet tab control will appear above the lyrics editor.



Duet tabs allow switching between duet modes. No duets is for editing lyrics -- it displays the entire text of the song. The other three are for each of the duet roles.

Selecting **Singer 1** tab will activate **Singer 1** duet mode. It will dim the lyrics that are not assigned for Singer 1 and preview will show Singer 1 lyrics only.

Duet tabs are used to synchronize the duet song. Unfortunately synchronizing duet songs takes three times as long as regular songs -- you have to synchronize part for both singers, and then individual parts for each of the two singers.

To continue with the tutorial try synchronizing the lyrics with the music. Select **Both** duet tab, click **Synchronize entire song** button on the toolbar, and synchronize the first and the last verse of the song. Then select **Singer 1** tab, click **Synchronize entire song** button again and synchronize the second and the third verse. And finally synchronize Singer 2 -- this time start in the middle of the second verse.

You may also load already synchronized song from `brother_john_3.pk2` file.

Please note that synchronization labels in the soundtrack panel are not visible in **No duets** mode -- you need to activate one of the duet tabs to display and edit them.

Settings

Now we may adjust the settings for duets. To do this double click any of the duet events (**Duet** dialog box will appear) and select **Duet settings** button to open **Duet settings** dialog box. Here you can define the text settings for Singer 1 and Singer 2 -- just select the mode on the top and adjust the settings. Please note that the number of lines apply to half of the screen only (Singer 1 uses the upper part and Singer 2 uses the lower part of TV screen). Settings for **Both singers** mode are copied from general CD+G settings.

Create file

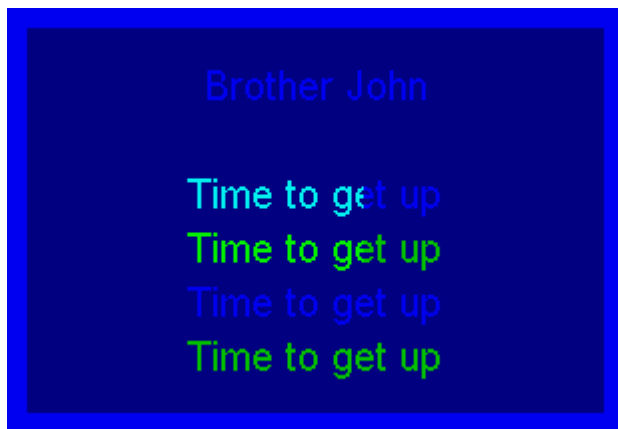
We are nearly done. All that is left is to create a CD+G file and to see if everything plays correctly. This is important, as sometimes, because of synchronization errors, some text may overlap.

To create a CDG file click **Create CD+G File** toolbar button (📀). You may leave all settings at default values -- simply click OK and see the result.

If you have missed any of the steps you may load the final file -- it is `brother_john4.pk2`.

Duets without screen split

If you do not wish to split the screen between two singers and rather have words for both singers displayed one after another, disable **Full duet mode** before creating CD+G file. Also the lyrics for both singers should interleave -- they need to be in the same order as they should be displayed (so in general this will be like duets in PowerKaraoke, but with concurrent highlighting).



We have prepared an example that shows this -- it is `brother john no split.pk2` file.

[The user interface](#)

[Entering lyrics](#)

[Working with soundtracks](#)

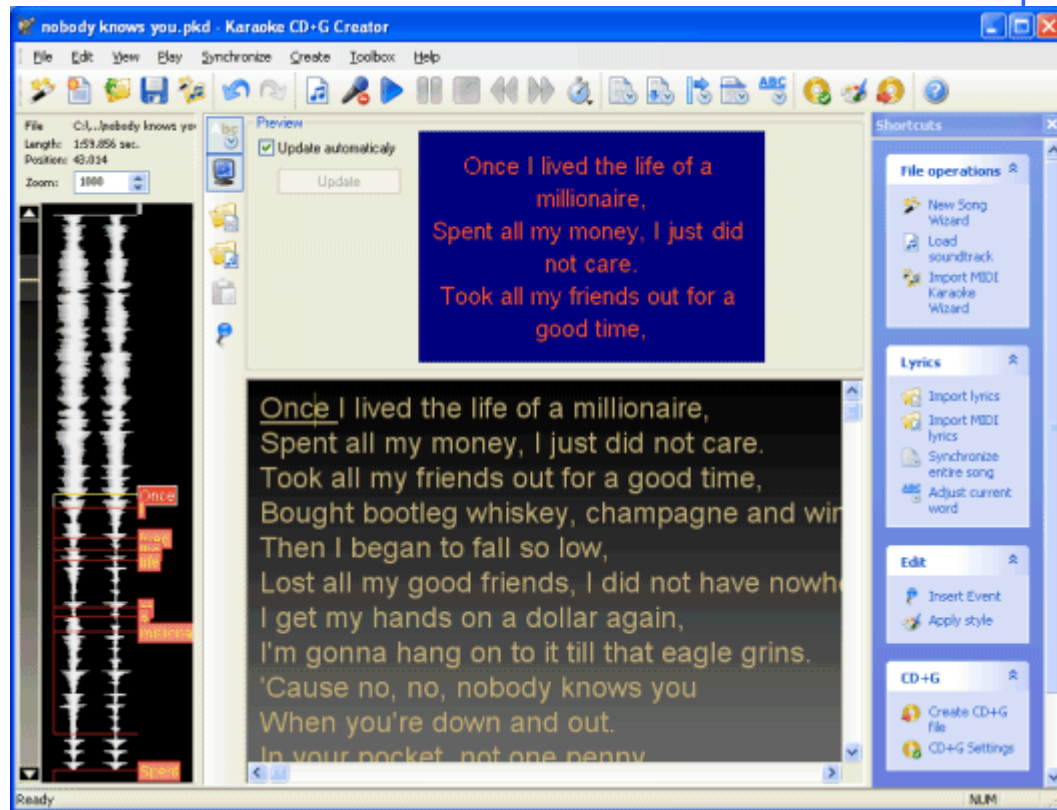
[Synchronizing lyrics](#)

[Creating CD+G files](#)

[What's new](#)

User interface

Main window



On the top you see common Windows interface items -- menu bar and toolbar.

Left side of the window is occupied by the **soundtrack panel**. It displays a waveform of the current soundtrack, and on top of it labels that correspond to the synchronized words. More information on using it can be found in [Using the soundtrack panel](#) section.

Right side of the window contains the **shortcut bar**. It contains shortcuts to most frequently used commands. Shortcut bar changes with context -- if you do not need it any more you may close (to display it again use **Shortcut bar** command from **View** menu). To leave the shortcut bar visible, but to disable animations, select **Preferences** from **File** menu and uncheck **Animate shortcut bar** option.

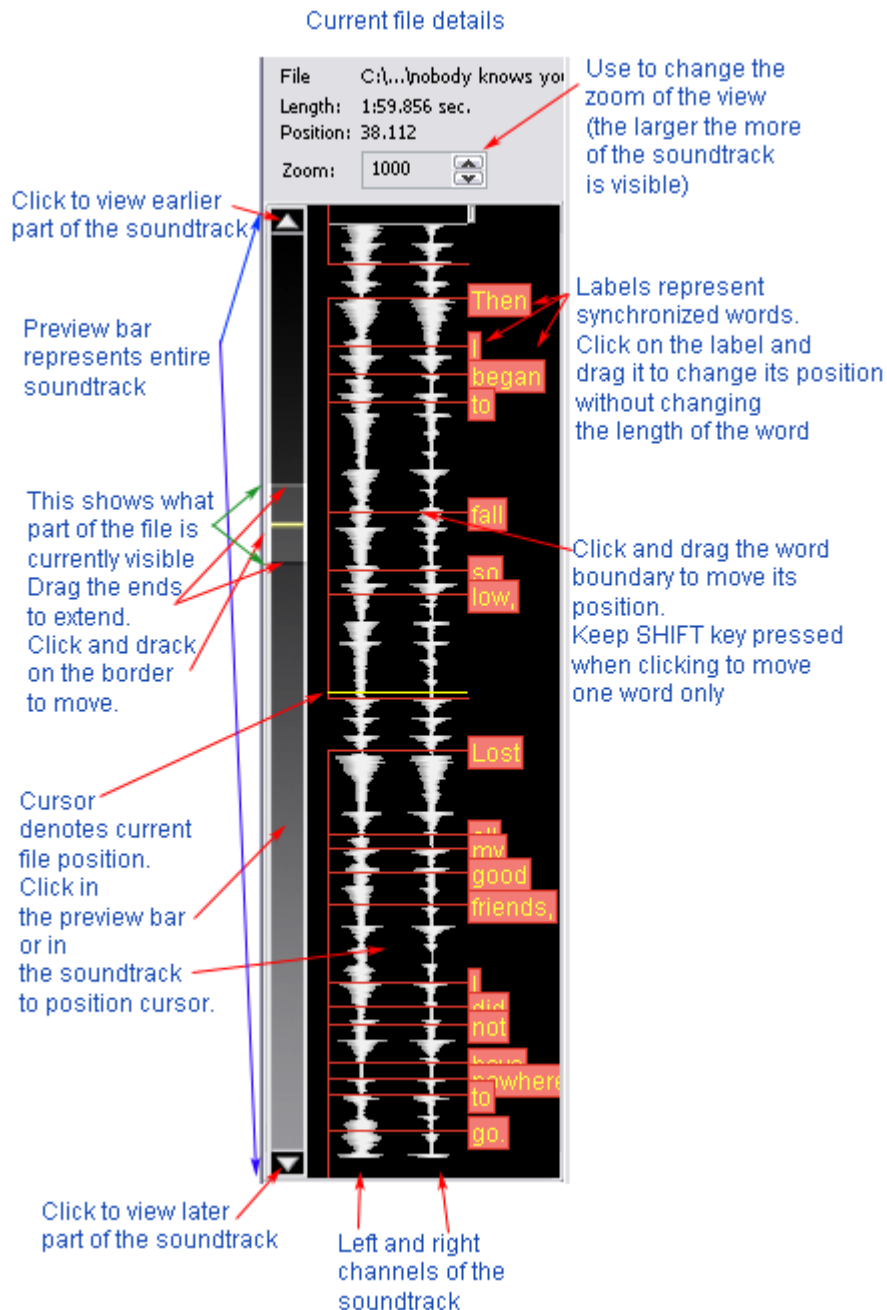
The main area of the screen is taken by the lyrics editor. It consists of two parts -- preview window on the top (you may close it with **Preview** toolbar button ) and lyrics area below.

Preview window displays the CD+G preview of the current part of the lyrics -- this is how your song will look on the TV screen. If your computer is slow, rendering preview may take a long time and your work will be uncomfortable. To avoid this either hide the preview window or disable automatic updates (clicking **Update** button will render the preview at the current cursor position).

Lyrics area allows to edit the lyrics text, insert CD+G events, and adjust synchronization of the words.

Soundtrack panel

Soundtrack panel contains a waveform view of the soundtrack and on top of it displays synchronized lyrics labels.



File details

Top of the soundtrack panel contains the name and the length of the current soundtrack file. Also current cursor position and zoom are displayed.

Zoom

Zoom corresponds to the number of samples shown by one pixel. Zoom 1000 means that every pixel on the waveform display represents 1000 samples. Karaoke soundtracks have frequency of 44100 samples per second, so at zoom 1000 44 pixels represent one second of music.

Use the arrows to modify the zoom. Higher values will show more of the screen on the file, increasing the density. Lower values will give more detail.

Preview bar

Preview bar is displayed on the left. It represents an entire file. The current part of the soundtrack is represented by a window on the preview bar.

Click anywhere in the preview bar to position the cursor.

Use arrows to move back and forth in the soundtrack.

You may extend the visible window by dragging its edges (see image above). It has the same result as changing zoom value.

Click at the bottom of the visible window and drag it to move the window.

Cursor

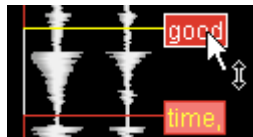
The horizontal yellow line is a cursor. It represents current position in the file. When you play the music the cursor will move. Click anywhere on the waveform or on the preview bar to move the cursor to the new location.

Labels

Labels are synchronized words. The horizontal red lines are start and end points. Label is attached to the start point.

Soundtrack panel can be used to adjust the start and the end of the word. This can be done in many ways.

To move the entire word click on the label and move it up and down. The word's duration will not be changed. The duration of the previous and the next word will be modified accordingly. You may not move the word earlier than the start of the previous word, and later than the end of the next word.



In this example you see mouse pointer on label 'good'.

To move the end of the word and the beginning of the next word position click and drag the word boundary (the red horizontal line).

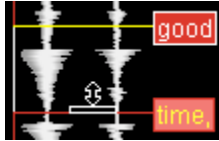


In this example end of word 'a' and start of word 'good' would be adjusted.

To move the start/end of the word without moving the end of the previous/next word hold down the `SHIFT`, and then click and drag the word boundary.



Only the beginning of the word 'good' would be moved.



Only the end of the word 'good' would be moved.

To place a cursor over the label boundary keep the **CTRL** key down and click as if label was not there.

Shortcut bar

Shortcut bar contains shortcuts to most frequently used commands of Karaoke CD+G Creator. Shortcut bar changes with context -- if you do not need it any more you may close (to display it again use **Shortcut bar** command from **View** menu). Shortcut bar is especially helpful when you start learning how to work with Karaoke CD+G Creator.

To leave the shortcut bar visible, but to disable animations, select **Preferences** from **File** menu and uncheck **Animate shortcut bar** option.

Lyrics editor

Lyrics editor allows you to edit lyrics, synchronize them, and to insert events in the text that control how your song will look like.

Lyrics editor is a simple text editor window with additional color information that describe word's synchronization status.

Grey text represents lyrics that are not synchronized

champagne

Brown text represents lyrics that are already synchronized

champagne

White text represents an active word during synchronization process.

champagne

During playback white is used to sweep the words.

When lyrics are synchronized lyrics editor displays one more information -- the current word. It is represented by the underline. To change the current word simply click it. The current word's label is automatically selected in the [soundtrack panel](#).

There are several ways of providing lyrics to Karaoke CD+G Creator. You may:

[Type the lyrics in](#)

[Import lyrics from the text file](#)

[Import lyrics from MIDI karaoke file](#)

[Paste the lyrics from the clipboard](#)

[Search for lyrics on the internet](#)

Lyrics editor allows to synchronize lyrics with music. For more information please see [Synchronizing lyrics](#) section.

Entering lyrics

The most obvious way to enter lyrics is to type them in. To do this activate the lyrics editor by clicking on it and start typing. You may listen to the song -- to start the playback use buttons on the toolbar.

Karaoke CD+G Creator provides more ways of entering lyrics. You may:

[Import lyrics from the text file](#)

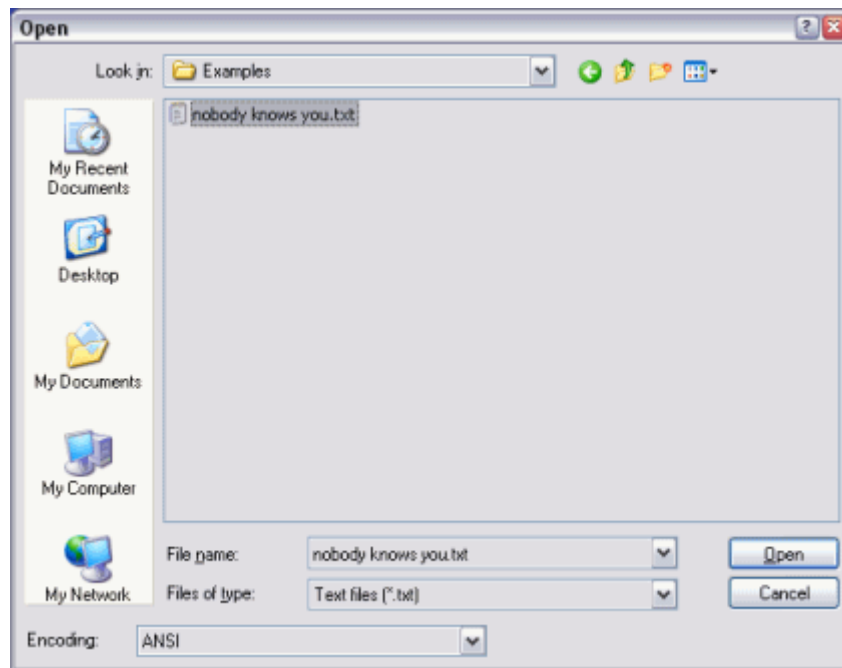
[Import lyrics from MIDI karaoke file](#)

[Paste the lyrics from the clipboard](#)

[Search for lyrics on the internet](#)

Import lyrics from the text file

To import lyrics from the text file use **Import lyrics** toolbar button () or choose **Import lyrics from a text file** command from **File** menu.



Text file should contain lyrics in plain text format. If you are using international characters or complex script, make sure to use **Unicode** encoding (select it in **Encoding** combo box).

Import lyrics from CD+G file

One of the most exciting features of Karaoke CD+G Creator is an ability to import existing CD+G songs. This allows to re-edit commercial editions of karaoke songs with endless possibilities -- use this to change font and images, fix broken characters, change lyrics or create parodies. Karaoke CD+G Creator imports both lyrics and synchronization, so the most cumbersome part of the song creation is already done, leaving you all the fun.

To import CD+G song select **Import CD+G File** command from **File** menu or click **Import CD+G File** button on the toolbar.

First you need to select file containing CD+G songs. Two file formats are supported -- CDG BIN file. If you

Getting started

3

use CDG file, Karaoke CD+G Creator will automatically look for MP3 file of the same name and use it as a soundtrack.

If **Insert 'Clear Screen' events automatically** is checked, Karaoke CD+G Creator will detect when entire screen is erased in CD+G song and will insert 'Clear Screen' events at the same places in the imported song. This help to maintain the text flow for page-by-page songs (SoundChoice songs give very good results with this option enabled).


Import process takes a while (up to half a minute on a slower computer). Once it is completed you will see the imported lyrics in the lyrics editor. Please check for spelling mistakes, as some of the characters may be recognized incorrectly.

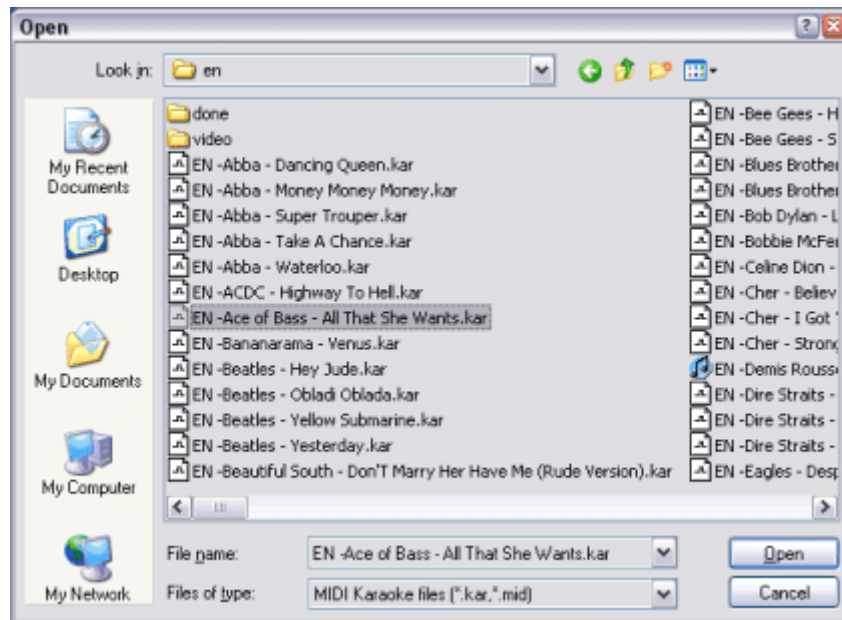
NOTE:

1. *Not every song can be imported. Duets are not supported, also songs using scrolling will not import.*
 2. *Optical character recognition (OCR) is not perfect and may sometimes make an error. Please check the lyrics for spelling mistakes.*
-

Import lyrics from MIDI Karaoke file

MIDI Karaoke files contain lyrics already synchronized with music. To import lyrics from MIDI Karaoke file

file use **Import MIDI lyrics** toolbar button () or choose **Import lyrics from MIDI Karaoke file** command from **File** menu.




If the MIDI file contains multiple lyrics tracks, the longest track will be used.

To import both lyrics and music from a MIDI karaoke file use [Import MIDI Karaoke Wizard](#).

Paste lyrics

Lyrics editor provides standard copy and paste functionality. You may use it to transfer the lyrics of the song from the text processing application or web browser

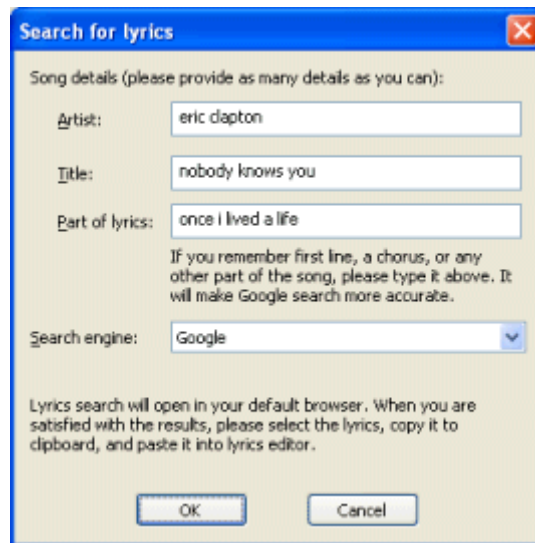
To paste the lyrics from into Karaoke CD+G Creator:

1. Activate the source application (web browser or word processor)
2. Select the lyrics text
3. Copy it to the clipboard (CTRL+C)
4. Activate Karaoke CD+G Creator, click into the lyrics editor in and paste the lyrics (use CTRL+V keyboard shortcut, **Paste** toolbar button () , or **Paste** command from **Edit** menu)
5. Lyrics will be inserted at the current cursor position.

Search for lyrics

Lyrics for most of the songs can be found on the internet. Karaoke CD+G Creator contains a helper tool that will run the search for lyrics in your web browser.

To search for the lyrics on the internet use choose **Search the web for lyrics** command from **File** menu.




You may enter the name of the artist, the title of the song, and part of the lyrics of the song (if you remember them).

By default Karaoke CD+G Creator uses Google to search for lyrics -- once you click OK the search will open in default web browser. Once you have found the song, select it and paste into the lyrics editor. [Click here for more information on pasting lyrics.](#)

You may also use a different search engine (we will be adding more of them in the future). In search engines other than Google only the artist name and title are used.

Working with soundtracks

The soundtrack is a background music that will play when you play your custom CD+G song. It may be an instrumental recording, a real song with removed vocals, or a MIDI song converted into appropriate format. Currently Karaoke CD+G Creator allows you to use the following file formats: WAV (Microsoft Windows soundfiles) and MP3 (but with constant bitrate only).







To choose the soundtrack click **Load Soundtrack** toolbar button () or choose **Load Soundtrack** command from **File** menu. If it is the first time you use the specified soundtrack, Karaoke CD+G Creator will scan its contents to increase the performance (during this process FPR file is created; it contains a preview of the soundfile and can be deleted if no longer necessary).

The soundtrack is displayed in the [soundtrack panel](#). To play the soundtrack use buttons on the toolbar or commands from **Play** menu. For more information on playing files see [Playback controls](#) section.

To replace the soundtrack with a different file (ie. with the same song, but after vocal removing), simply choose **Load soundtrack** again. All synchronization information will be retained.

Playback controls

To play the soundtrack use toolbar buttons or commands from **Play** menu.

| | | | |
|---|--------------------------|--------|---|
|  | Start | Ctrl+1 | Start the playback from current cursor position |
|  | Pause | Ctrl+2 | Pauses the playback and resumes it |
|  | Stop | Ctrl+3 | Stops the playback. Cursor stays at the last played position. |
|  | Rewind | Ctrl+4 | Moves the playback position 10 seconds backwards |
|  | Forward | Ctrl+5 | Moves the playback position 10 seconds forward |
|  | Playback speed | | Allows to change the playback speed |
| | Play from start | Ctrl+6 | Moves the cursor to the start of the file and starts the playback |
| | Play current word | Ctrl+7 | Plays the current word (starts 1 second before and ends 1 second after) |
| | Play current word (loop) | Ctrl+8 | Plays the current word in loop |


During the playback the cursor moves as the playback position changes. Also, if **Highlight lyrics during playback** option in **Synchronize** menu is selected, Karaoke CD+G Creator highlights words in lyrics editor.

TIP: If the song is fast paced and you are having problems synchronizing it, use one of the lower playback speeds. But please remember that the sound might be slightly distorted.

Synchronizing lyrics

The most important step in the process of creating karaoke songs is synchronizing the lyrics with the music. To allow the performer to sing along the words need to be highlighted as they should be sung.

To synchronize the words you have typed in or imported use commands from **Synchronize** menu or buttons from synchronization group on the toolbar.

The first step will usually be to synchronizing the entire song – to do this select **Synchronize entire song** button () or **Synchronize entire song** menu command. Karaoke CD+G Creator will enter the synchronization mode and the synchronization toolbar will appear.





The lyrics will be colored to visualize the current synchronization state – brown color marks the part of the lyrics that have already been synchronized, the white color highlights the word that is to be synchronized next, and gray is applied to the words that have not been synchronized yet.


To synchronize the highlighted word you have to press the `SPACE` key or select the **Set** toolbar button at the moment that the word should be sung. The currently highlighted word will be marked as synchronized

and the next word will become highlighted. You may pause and restart the playback using standard playback controls (**Play**, **Pause**, and **Stop**), and if you make a mistake you may press the `Backspace` key or select **Back** toolbar button. The last synchronized word will become unmarked. You may also move the playback position ten seconds backwards by pressing minus key or selecting **Rewind** toolbar button – all the synchronization information for the last ten seconds will be erased.


If you make a mistake or for some other reason do not reach the end of the song in a single synchronization pass, fear not. You may continue the synchronization from the place you have stopped by

selecting **Continue synchronization** toolbar button () or menu command. If you want to redo the synchronization from the certain point, place the cursor there and select **Synchronize from cursor**

toolbar button () or menu command. Note that all the synchronization information after the selected word will be deleted. One more possibility is to retry synchronizing one of the completed lines. To do this

place the cursor in the line you want to redo and select **Synchronize current line** toolbar button () or menu command. All the synchronization information in the current line will be deleted, but all the rest of the song will remain as it is.

To check the results of the synchronization you need to make sure that **Highlight lyrics during playback** option is checked (this corresponds to pushed in **Highlight during playback** button on the lyrics pane

toolbar ) and play the file. As the file is played back, the lyrics that should be sung are highlighted. Note that the words are highlighted letter-by-letter, so the singer can see how fast should the word be sung. During the playback you may move the cursor and the playback will resume from the selected word.

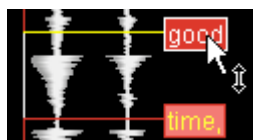
If you find synchronization mistakes, there are two ways you may fix them:

[Modifying word synchronization using soundtrack panel](#)
[Using Adjust current word dialog box](#)

Modifying synchronization using soundtrack panel

Soundtrack panel can be used to adjust the start and the end of the word. This can be done in many ways.

To move the entire word click on the label and move it up and down. The word's duration will not be changed. The duration of the previous and the next word will be modified accordingly. You may not move the word earlier then the start of the previous word, and later than the end of the next word.



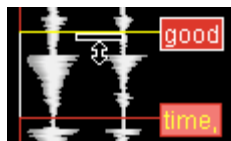
In this example you see mouse pointer on label 'good'.

To move the end of the word and the beginning of the next word position click and drag the word boundary (the red horizontal line).

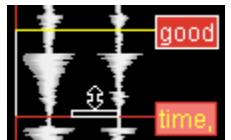


In this example end of word 'a' and start of word 'good' would be adjusted.

To move the start/end of the word without moving the end of the previous/next word hold down the **SHIFT**, and then click and drag the word boundary.




Only the beginning of the word 'good' would be moved.

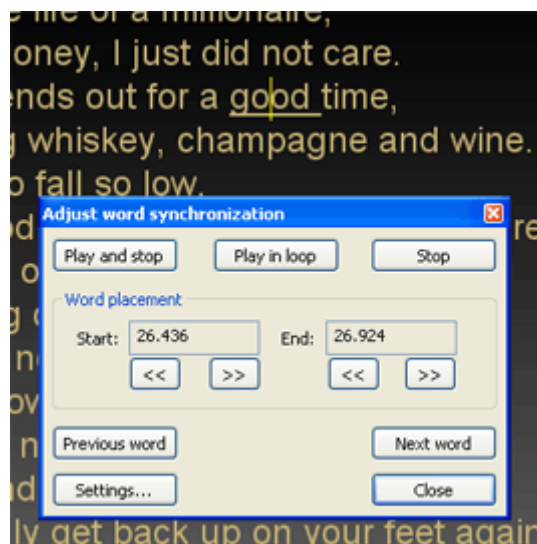


Only the end of the word 'good' would be moved.

To place a cursor over the label boundary keep the **CTRL** key down and click as if label was not there.

Adjust current word dialog box

To adjust the synchronization of the word, click on the word in the lyrics editor (it will become underlined), and click **Adjust current word** toolbar button () or select **Adjust word synchronization** menu command. You may also right-click the word and select **Adjust word synchronization** command from a pop-up menu.



Adjust word synchronization dialog box will appear under the current word.

Word placement displays current time for start and end of the word in seconds. To move them use buttons below.

*TIP: To change the amount that is added or subtracted to the time click on **Settings** button and modify **Adjust amount** value.*

You may check the synchronization of the word using playback buttons.

Play and stop will start the playback before the word and and stop after it is highlighted. Karaoke CD+G Creator will highlight the word during playback.

Play in look will continuously play current word.

By default the playback is started two words before current word and stopped one word after the current word. To modify this values click **Settings** and change **Play before** and **Play after** values. You may tell Karaoke CD+G Creator to start several words earlier or enter a time value in seconds.

Stop button stops the playback.

After you have adjusted the synchronization for the word you may close the dialog box using **Close** button, or you may move to the next or previous word using the appropriate buttons.

Shift Labels

Shift Labels command from **Edit** menu allows to move all labels at once.



Offset is the value in milliseconds that will be used to move all labels. Negative value moves labels backwards.

Creating CD+G files

Before creating CD+G file that can be burned to a CD+G disc you need to make sure that your song looks good.

[Using CD+G Preview window](#)

There are several ways of changing the appearance of CD+G song:

[Using styles](#)

[Modifying CD+G settings](#)

[Using CD+G events](#)

Once the song looks good you are ready to write it to CDG file.

[Writing CD+G files](#)

You may play CD+G song with Power CD+G Player

[Playing CD+G files](#)

Karaoke CD+G Creator does not burn CD+G discs. To do this you need Power CD+G Burner. [To learn more visit Power CD+G Burner website.](#)

Using CD+G Preview window

CD+G preview window is located above the lyrics editor.

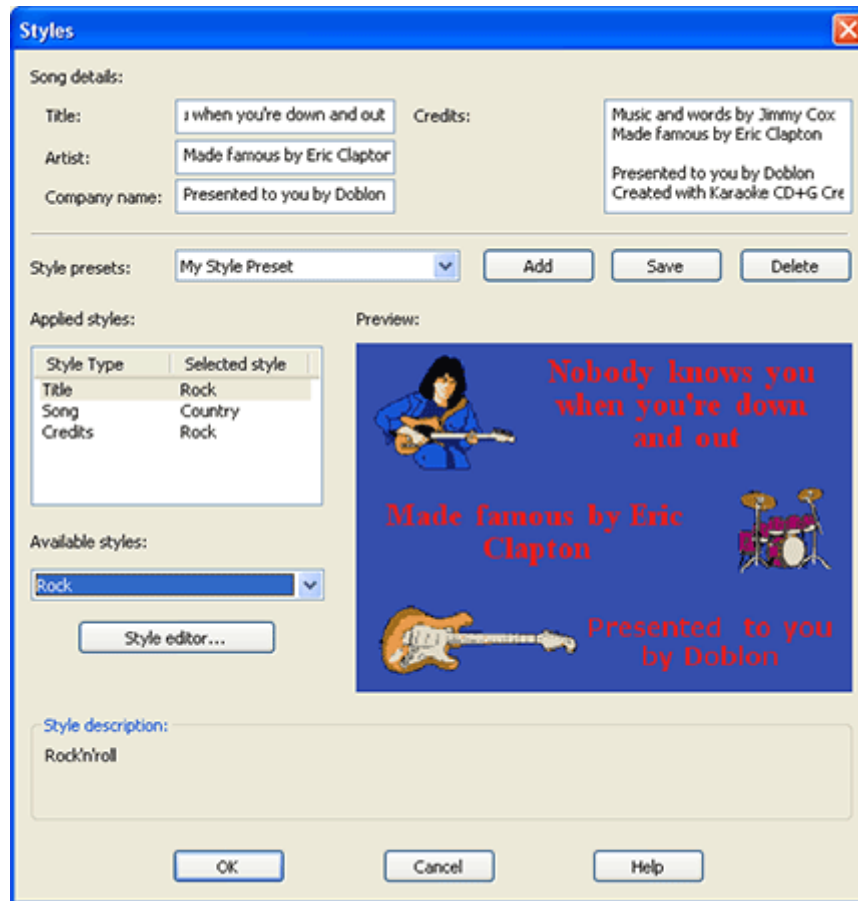


It displays the CD+G preview of the current part of the lyrics -- this is how your song will look on the TV screen. Please observe that the content of the preview window changes as you change the position of the cursor in the lyrics editor -- it always displays the page cursor is currently at.

*TIP: If your computer is slow, rendering preview may take a long time and your work will be uncomfortable. To avoid this either hide the preview window or disable automatic updates (clicking **Update** button will render the preview at the current cursor position).*

Using styles

To apply a predefined visual style to your song click **Styles** button on the toolbar () or select **Styles** command from **Create** menu.



Song details section of the dialog box allows you to enter title of the song, artist name, and text that will be displayed as your company information (probably something like *Presented to you by DOBLON*). Credits are displayed after the song is finished.

***Tip:** To force a new line in Title, Artist, or Company name fields, use ^ character.*

What is style?

Karaoke CD+G Creator allows to set styles for:

- **Title:** image displayed before the song
- **Credits:** image displayed after the song is finished
- **Song:** colors, text formatting, page layout, and image (in Pro version only) of the lyrics

Each of this styles can be applied individually, or it is possible to use presets.

Style preset combo box allows to select one of predefined templates. It will change all styles in **Applied styles**. You may store your combination of Title, Song, and Credit styles using **Add** button. To save changed combination use **Save** button. **Delete** button removes your preset from the list.

Applied styles lists styles used for each of the sections of the song. To change the style select it in **Applied styles** list and then choose the new style from **Available styles** combo. Selecting **(Unused)** will disable the style.


Style editor button starts [Style Editor dialog box](#) which allows you to create your own styles.

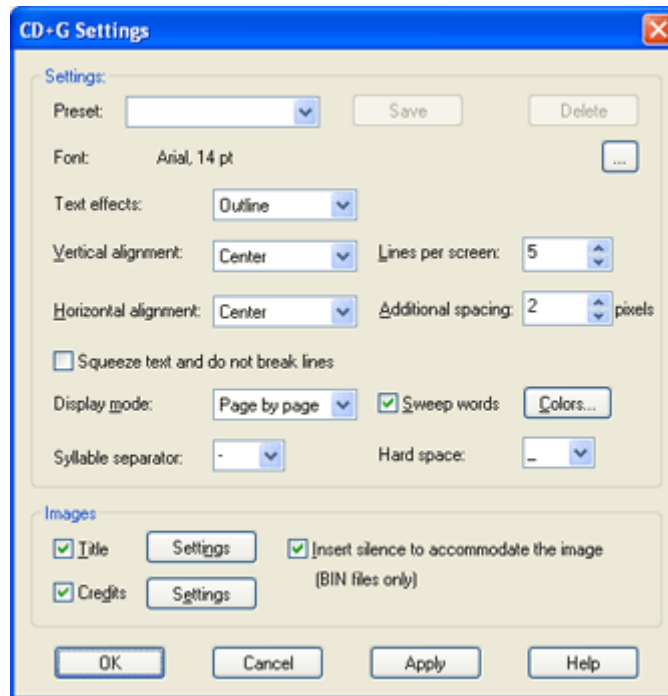
Preview window displays the preview of the style selected in **Applied styles** list.

Selected styles will be applied to the song when you select **OK** button.

Modifying CD+G settings

Usually you will want to adjust CD+G parameters to your liking. To open **CD+G Settings** dialog box click

CD+G Settings button on the toolbar () or select **CD+G Settings** command from **Create** menu.



Font

This setting specifies which font will be used for the lyrics and how large the letters should be. If you are trading you PKD files make sure that you use fonts that are installed on the destination computer.

Text Effects

Select the text effect you want to apply. You have the choice of Outline (you may choose the size of the outline), Shadow and Heavy shadow. The color of the text effects can be set in Colors dialog box.

You may enable any of the following text effects:

- None Text effects are disabled
- Outline Text is outlined by a single pixel
- Shadow A one pixel shadow is added to text
- Heavy shadow A two pixel shadow is added to text
- Outline (2-5 pixels) An outline of a selected width is added to the text

The color of the effect is controled separately from the color of the text. By default effects are painted in black.

Note: Enabling text effects decrease the speed of display the text. For the fast-paced songs it is recommended to disable the text effects.

Vertical alignment

Allows to change the placement of the lines of the text. You may select Center, Top, or Bottom which

would place the text at the appropriate part of the screen, or choose Space evenly, which makes sure that the first line is at the top, the last at the bottom, and all the spaces between the lines are equal.

Horizontal alignment

This setting controls the way the individual lines of text are placed. You have the choice of Center, Left, and Right.

Lines per screen

Allows to specify the maximum number of lines to be shown. Note that if the font size is too large, the actual number of lines may be lower.

Additional spacing

The number of pixels to insert between the lines.

Squeeze text and do not break lines

When this option is selected Karaoke CD+G Creator will not break lines -- it will resize it horizontally so every line fits the screen. This may help placing the text in the song, but if the lines are too long may decrease the readability of the text.

Sweep words

Uncheck this option if you want to highlight the entire word at once, instead of coloring it gradually as it is sung.

Syllable separator

Allows to select the character that separates syllables in the song text. By default the syllable separator is a hyphen (-).

Hard space

This option allows to change the default character that will be displayed as a space, but does not split the word (e.g. hard_space will be treated as a single word). By default the hard space character is an underline (_).

Colors

Allows to change the background, border and text color. Simply choose the appropriate color from the list or use More button to select the custom color.

Pro Display mode

You may also select the text display mode. Choosing **Page by page** will result in the standard paged display. **Overwrite** will disable the screen erasing and the new words will overwrite the already sang. And **Scrolled** mode will generate the long flow of text that will move upwards with the highlighted line always in the middle.

Mode information on display modes can be found in [Display modes](#) section.

Images

This group of options allows to select the pictures that are to appear before the song and after the song. By default these pictures are disabled. Checking **Insert silence to accommodate the picture** ensures that the title picture will not interfere with the flow of the song (this option works for BIN files only). To learn more about using images in Karaoke CD+G Creator see [Images](#) section.

Preset

You may save a current set of options and use it later for different song using the Save button. To invoke the preset select it from a pop-down list. To delete the existing preset use Delete button.

Apply

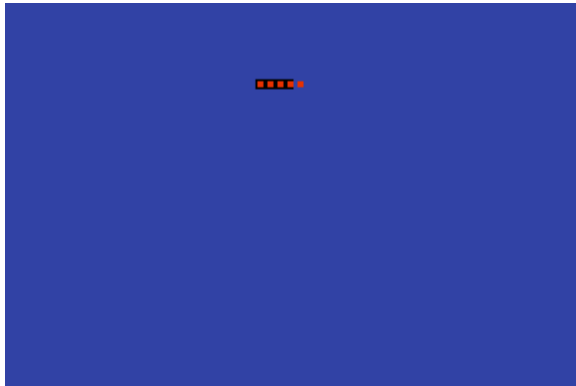
Apply button will update the preview window of lyrics editor so that you will see the changes you have made (you may have to move CD+G Settings dialog to show preview window beneath it).

Display modes

Pro *Note: These settings are available in Pro version only. Karaoke CD+G Creator has paged display mode only.*

Karaoke CD+G Creator Pro has 3 display modes.

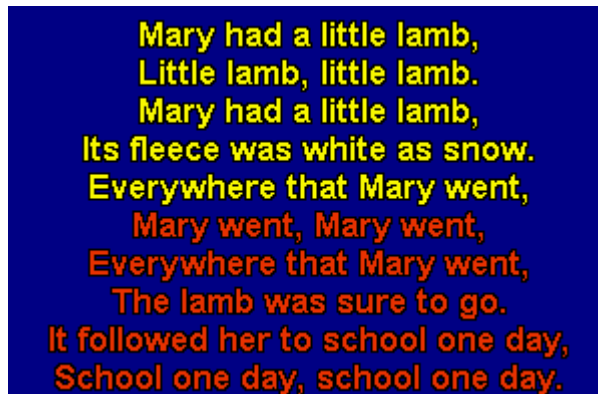
Page by page will result in the standard paged display. Full page of lyrics is displayed, and when it is fully highlighted, a new page is presented.




Overwrite will disable the screen erasing and the new words will overwrite the already sang. This mode should be used when there is an image on screen -- it will ensure that image is not erased.

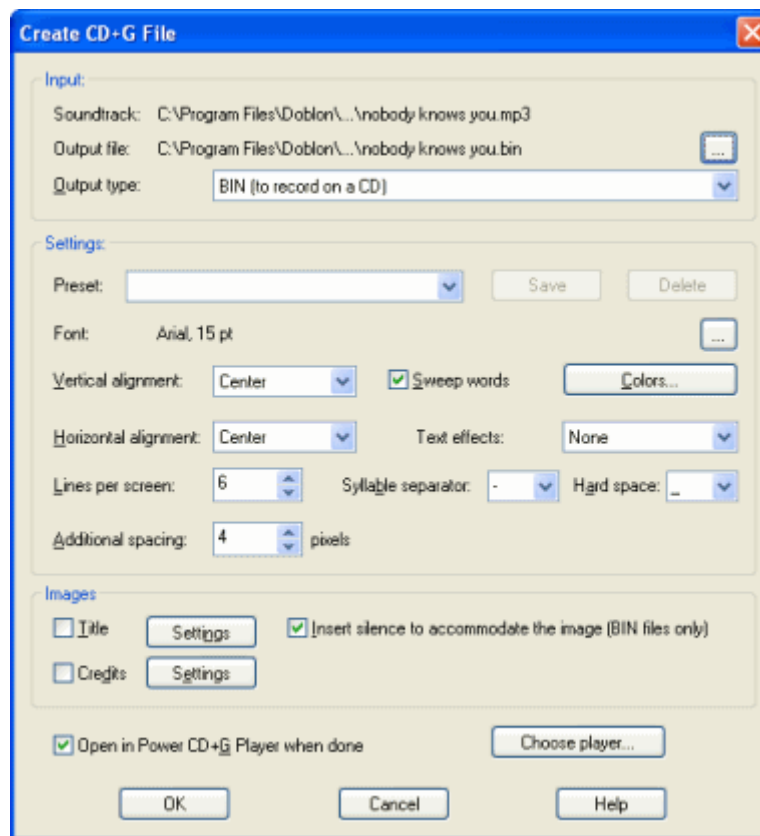


Scrolled mode will generate the long flow of text that will move upwards with the highlighted line always in the middle. Note that some songs (faster ones) can not be presented properly in Scrolled mode.



Writing CD+G Files

Click **Create CD+G File** button on the toolbar () or select **Create CD+G File** command from **Create** menu. You may also press **F2** key on the keyboard.



If you want to write this track to a CD, you need to select **BIN** as the output type. Selecting **CDG** output type will allow you to preview the result in Power CD+G Player. By default the output file is created in the same directory as the soundtrack file. Make sure that you have all necessary user privileges, or change the output file location.

Please note that most of the settings is the same as those in [CD+G Settings dialog box](#).

If you would like to preview the output file, make sure that **Open in Power CD+G Player when done** option is checked. You may select a different software CD+G player if you have one -- use **Choose player** button to do this.

Tip: If Power CD+G Player Pro is installed on your computer, you will be prompted to use it as a default CD+G player in Karaoke CD+G Creator.
[Click here to visit Power CD+G Player Pro website.](#)

Now click **OK** to create CD+G file.

Playing CD+G files

Power CD+G Player can be used to play the tracks you create with Karaoke CD+G Creator.



It is a good idea to view the song in full before burning it to the CD.

What's new

Karaoke CD+G Creator is based on PowerKaraoke, but it introduces many new features. Below are the most important of them.

Version 2.0.1.

- [New user interface](#)
- [Shortcut bar](#)
- [Styles](#)
- Parallel duets
- [Playback speed change \(lower playback for easier synchronization\)](#)
- [Create New Song wizard](#)
- Countdown event
- Time placement of images
- Automatic countdowns
- [Squeeze text option](#)
- Improved vocal remover
- [Adjust word synchronization](#)
- [Apply in CD+G Settings dialog](#)
- [Improved Import MIDI Karaoke Wizard](#)
- [Search for lyrics on the web](#)
- Search for MIDI Karaoke on the web
- Make lyrics uppercase
- Lyrics export

- Preferences

[Removing vocals](#)

[Creating duets](#)

[Using CD+G events](#)

[Images](#)

[Searching for MIDI Karaoke on the web](#)

[Batch file create](#)

[Batch MIDI import](#)

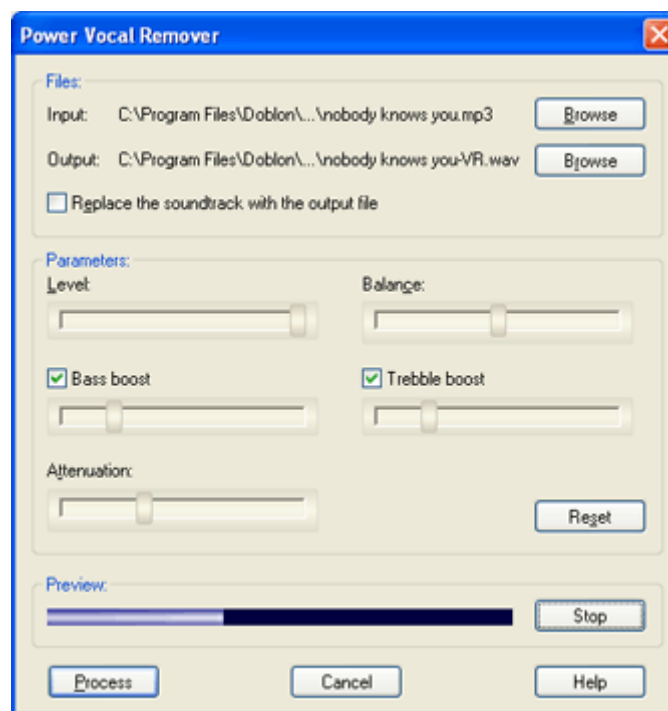
[Advanced lyrics import](#)

[Exporting lyrics](#)

Removing vocals

Power Vocal Remover is a tool that allows removing a lead vocal from a stereo recording. It bases on a common technique used in song mastering – lead vocal is usually mixed equally between both stereo channels.

To start Power Vocal Remover click **Vocal Remover** button on the toolbar () or select **Vocal Remover** from **Toolbox** menu.



Files

Here you may select the input and the output of the processing. By default the input file is the current soundtrack and the output name is created by appending –VR to the input name.

By selecting **Replace the soundtrack with the output file** you may automatically change the soundtrack to the result of the processing.

Parameters

Vocal Remover has several parameters.

Level controls the intensity of the effect. By default the reduction is as heavy as possible.

Changing **Balance** can give better results with songs where vocals are panned to one of the channels.

Attenuation allows to increase the volume of the output if necessary.

Bass boost and **Treble boost** control the amount of low and high frequencies that are left untouched by the algorithm. Enabling them usually improves the quality of the vocal removed material.

Preview

Play/Stop button starts the playback and allows to perform a real time tuning of the effect. You may change the playback position by clicking on the progress bar left to the button.

Usage tips

Vocal Remover gives good results for many CD tracks. You need to remember that it is not a magic tool and will not work if vocals are mixed in non-standard way. Sometimes the song is produced in a different way and sound effects (reverb or chorus) applied to the lead vocal disturb the algorithm. And also MP3 files usually do not give good results as compression changes the internal structure of the recording, so it is best to use WAV files created from CD tracks (converting MP3 to WAV will not improve quality).

Creating duets

Simple duets

Basic version of Karaoke CD+G Creator offers basic duet support. It changes text settings using predefined duet styles to visualize the change of the singer. For more information please see section [Using duet events](#).

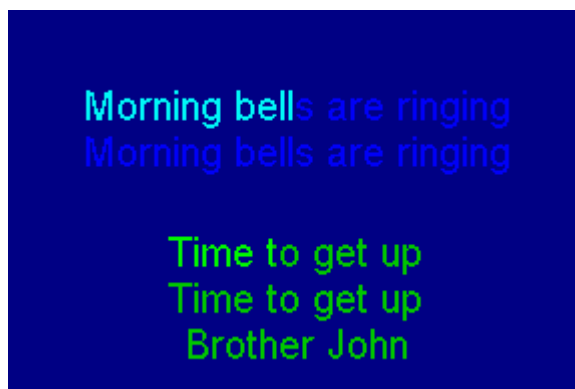
Advanced duets

Pro version allows to create professional parallel duets. The most important features are:

[Duet Wizard that helps to assign lyrics to singers](#)

[Full duet synchronization mode](#)

[Divided CD+G screen for duets \(Singer 1 at top and Singer 2 at the bottom of the screen\) with separate settings for each of the singers](#)




Please note that in tutorials section you will find [Create song with duets tutorial](#).

General remarks

In duet mode Karaoke CD+G Creator divides the song in three modes: parts that are to be sung by Singer 1, those to be sung by Singer 2, and parts of the song sung together by both singers.

Parts sung by both singers are displayed in the same manner as the lyrics in non-duets song. But when Karaoke CD+G Creator finds duet part, it divides the screen into two parts and displays lyrics for singer 1 at the top, and lyrics for singer 2 at the bottom (see image above).

To enable duets in Karaoke CD+G Creator use **Full duet mode** toolbar button () or select **Enable full duet mode** from synchronization menu.

Non-split duets

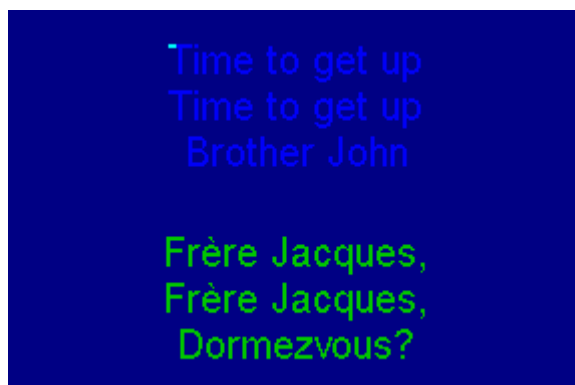
If you do not wish to split the screen between two singers and rather have words for both singers displayed one after another, disable **Full duet mode** before creating CD+G file (it must be enabled in the synchronization mode). Also the lyrics for both singers should interleave -- they need to be in the same order as they should be displayed (so in general this will be like duets in PowerKaraoke, but with concurrent highlighting).



We have prepared an example that shows this -- it is `brother john no split.pk2` file located in `Examples` subdirectory of Karaoke CD+G Creator directory (usually `C:\Program Files\Doblon\Karaoke CD+G Creator Pro` or `Documents\My Karaoke\Karaoke CD+G Creator Pro Examples` on Windows Vista).

Multiple languages

Full duet mode can be used to create song in two languages.




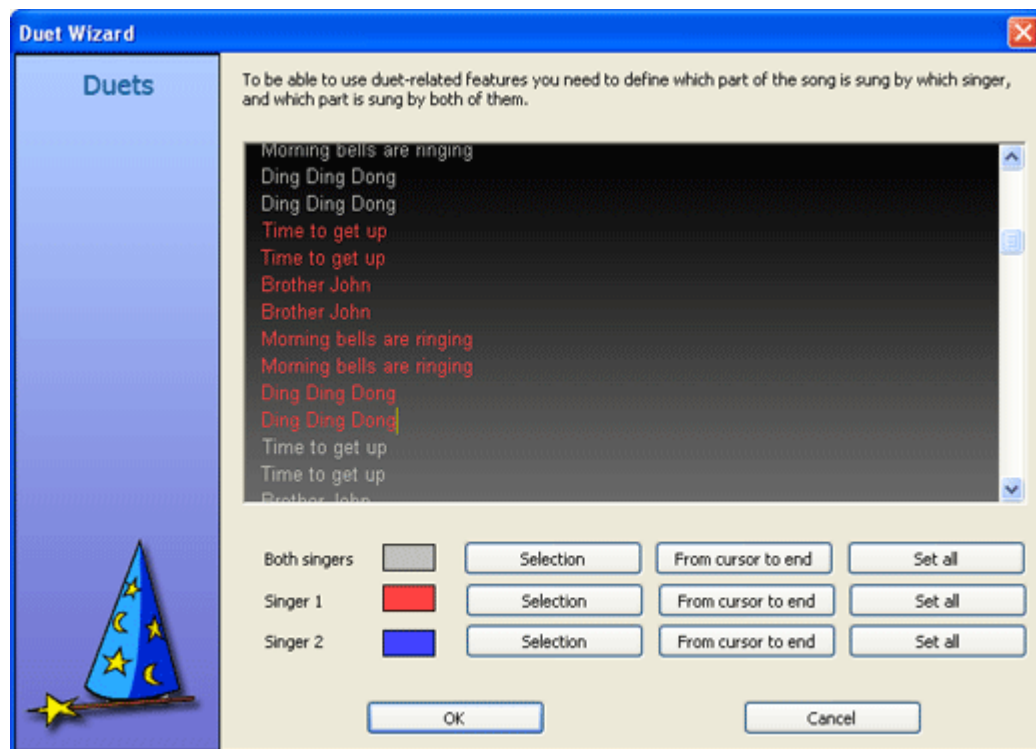
Getting results

4

Please see brother john two languages.pk2 file located in Examples subdirectory of Karaoke CD+G Creator directory (usually C:\Program Files\Doblon\Karaoke CD+G Creator Pro or Documents\My Karaoke\Karaoke CD+G Creator Pro Examples on Windows Vista).

Duet Wizard

Duet Wizard allows to assign portions of the lyrics to each of the singers. To start it click **Duet Wizard** button on the toolbar () or select **Duet Wizard** from **Edit** menu.



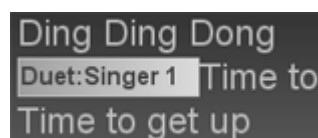
Lyrics assigned to Singer 1 are red, lyrics assigned to Singer 2 are blue, and those that should be sung together are grey.

To assign a part of the lyrics to particular singer (or to both singers) select this part in the lyrics window (drag mouse to select the text) and then click **Selection** button next to the singer mode you want to use. Duet Wizard always uses full lines, so if you position the cursor in the middle of the line and then click **Selection**, entire line will be assigned.

From cursor to end buttons allow to assign all song lyrics from the current cursor position to the end of the song to one of the duet modes.

Set all will assign entire song to one of the modes.

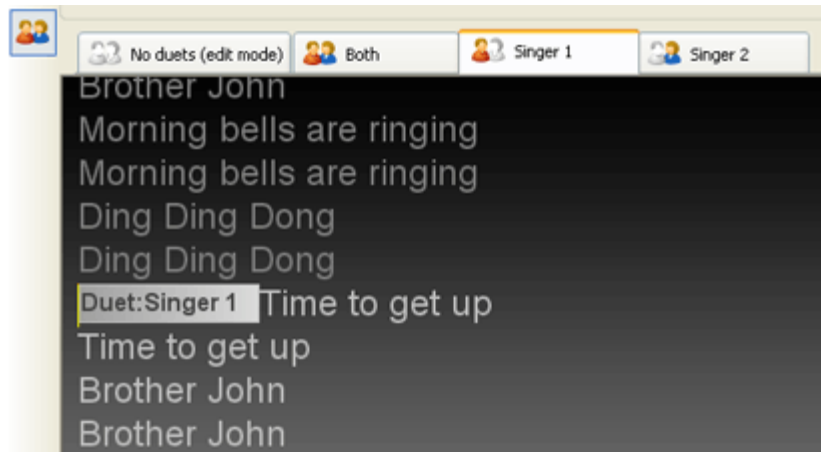
After you close Duet Wizard with **OK** you will see that Duet events have been inserted in the text of the song.



Please note that you can enter Duet Wizard many times and the current duet assignments will not be the starting point for further editing.

Full duet synchronization

To enable full duet synchronization (if it is not enabled already) click **Full duet mode** button on the toolbar (👤👤) or select **Enable full duet mode** from **Synchronize** menu. Duet tab control will appear above the lyrics editor.



Duet tabs allow switching between duet modes. No duets is for editing lyrics -- it displays the entire text of the song. The other three are for each of the duet roles.

Selecting **Singer 1** tab will activate **Singer 1** duet mode. It will dim the lyrics that are not assigned for Singer 1 and preview will show Singer 1 lyrics only.

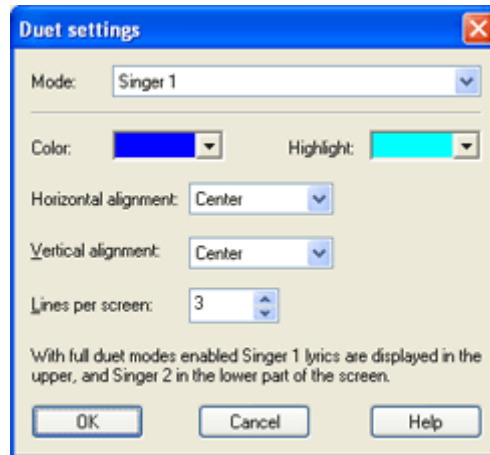
Duet tabs are used to synchronize the duet song. Unfortunately synchronizing duet songs takes three times as long as regular songs -- you have to synchronize part for both singers, and then individual parts for each of the two singers.

Please note that synchronization labels in the soundtrack panel are not visible in **No duets** mode -- you need to activate one of the duet tabs to display and edit them. **No duets** mode allows text edits -- if you need to change text go to **No duets**, do the editing, and return to duet mode.

Synchronization for each of the duet modes works in the same way as synchronization in non-duet way. To learn more about it please see [Synchronizing lyrics](#) section.

Duet settings

To adjust the settings for duets double-click any of the duet events (**Duet** dialog box will appear) and select **Duet settings** button to open **Duet settings** dialog box.

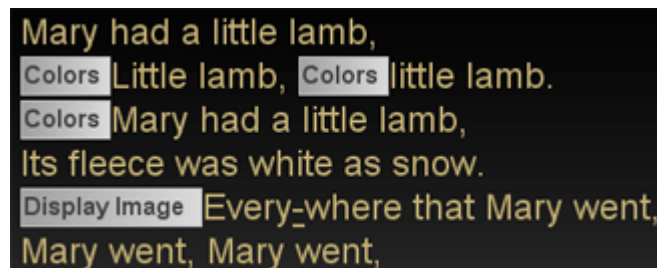


Here you can define the text settings for Singer 1 and Singer 2 -- just select the mode on the top and adjust the settings. Please note that the number of lines apply to half of the screen only (Singer 1 uses the upper part and Singer 2 uses the lower part of TV screen). Settings for **Both singers** mode are copied from general CD+G settings.


Using CD+G Events

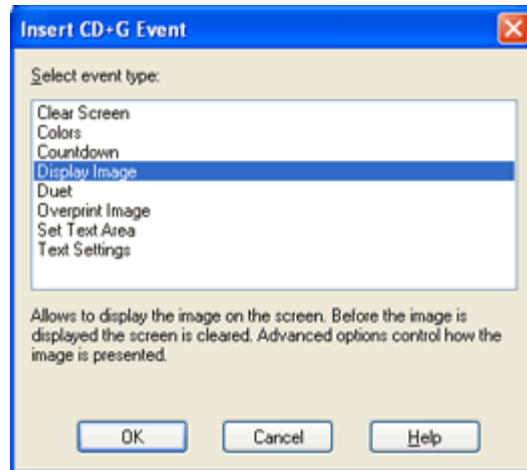
Karaoke CD+G Creator gives you the full control over the CD+G track you create. You may change the text properties, colors, and display images anywhere in the song. These extra options are available by the means of CD+G events. CD+G event is executed after the preceding word is painted or highlighted (it depends of the event, eg. Clear screen is triggered after highlighting, while Colors event during painting).

You work with CD+G events in lyrics editor. They are displayed as boxes with text describing the type of the event.



In order to insert a CD+G event position the cursor in the place the event should be inserted and click

Insert Event button on the lyrics pane toolbar () or select **Insert CD+G event** menu command from **Edit** menu. **Insert CD+G Event** dialog box will appear, allowing you to select the event type from the list.



Below is the list of events available in Karaoke CD+G Creator. Please remember that some of them are available in Pro version only. After you select the type of the event another dialog box is displayed that allows to set the properties of the selected event type.

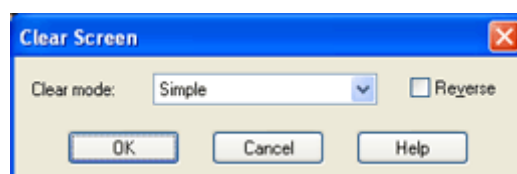
| | |
|--|---|
| Clear Screen | Causes a screen to be erased after the last word before the event becomes highlighted |
| Colors | Allows to change colors for text (both normal and highlighted), effects, background, and border |
| Countdown | Inserts countdown mark before the next word that helps the singer to start on time |
| Display Image | Allows to display an image on the screen. Before the picture is displayed the screen is cleared. |
| Duet | Allows to change the coloring of the text to visualize the change of a singer |
| Pro Overprint Image | Pro In Pro version duets can be parallel Allows to display the image anywhere on the text. It may also be used to erase a part of the screen |
| Pro Set Text Area | Using this event you may display the image and the text on screen at the same time. It also allows to change the portion of the screen that is used to display the lyrics |
| Text Settings | Allows to modify the properties of the text |

Events can be edited. **To edit an event** double-click it in the lyrics editor or right-click it and select **CD+G Event Properties** command from pop-up menu.

Events can be deleted like other text. There is one more editing feature available for events -- you may copy event and insert it in some other place in the song. to do this right-click an event to copy and select **Copy Event** command. Now right-click in the place you want the copy of the event to appear and select **Paste CD+G Event** command from pop-up menu.

Clear Screen event

This CD+G event will cause a screen to be erased after the last word before the event becomes highlighted.

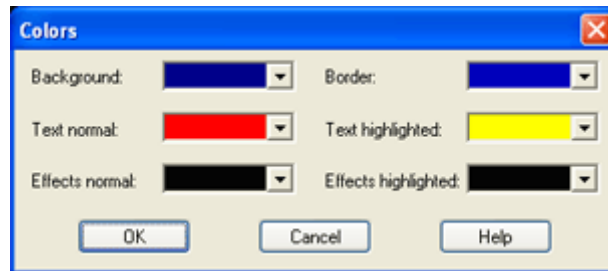


You may select the mode that will be used to clear the screen (the default **Simple** is the fastest and results in immediate screen erase). **Reverse** will cause the effect to be reversed (ie. Left to Right will become Right to Left).

Pro If scrolling display mode is selected, after clearing the screen lyrics will painted from the top of the screen.

Colors event

Colors event allows to change colors for text (both normal and highlighted), effects, background, and border.



Colors change will affect all words after the event. We do not recommend changing background and border colors in the middle of the page, only after of immediately before *Clear screen* events.

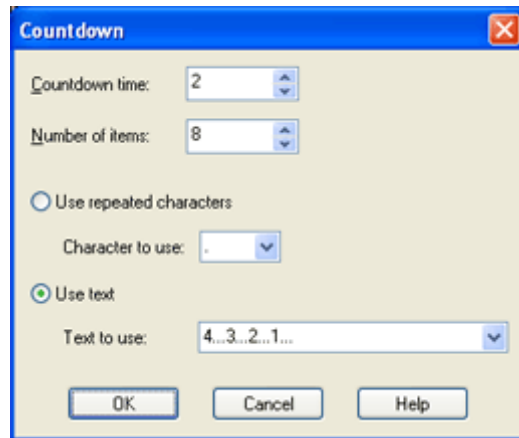
With Colors event it is possible to change the sweep mode from highlighting text to highlighting the text outline. To do this select the same color for normal and highlighted text, and then select different colors for normal and highlighted effects. Also make sure to enable Outline text effects in **CD+G Settings** dialog box.

Due to CD+G format limitations (only 16 colors can be used at one time) if you use too many color changes on one screen you may experience problems (you will not the colors that you want). We advice to use no more than 6 color sets with disabled effects and no more that 3 color sets with enabled effects.

Pro Color event needs to be used cautiously if you choose to display image using *Set text area* event, as the maximum number of colors on screen is 16, and usually image uses up to 10. With one color for background and one for border this leaves 4 colors for text -- that is 2 color sets with no effects and only one with effects enabled.

Countdown event

Countdown event tells Karaoke CD+G Creator to display a countdown marker before the next word is highlighted. In the current version of the program countdown marker is a string of dots.



Countdown time defines the duration of the countdown (2 seconds by default).

Number of items is the number of characters to display.

Use repeated character select the default mode of repeating the single character several times. You may change the character used in **Character to use** field.

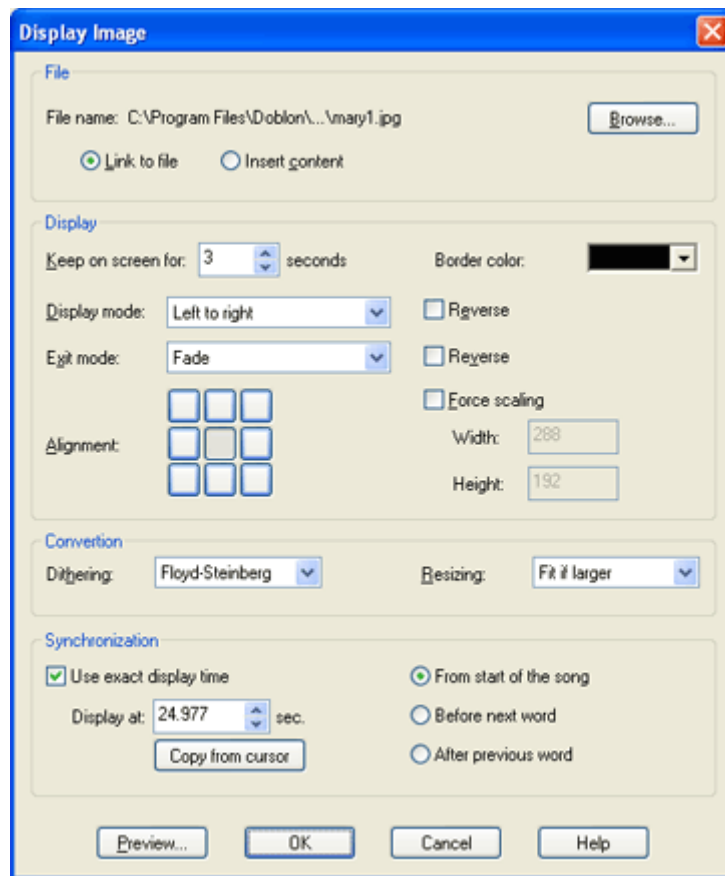
Use text allows to enter text that will be used as a countdown. The text has to be entered into **Text to use** field.

Display Image event

Display Image event allows to display the image on the screen. Before the image is displayed the screen is cleared.

The image will be displayed immediately after the last word before it is highlighted.

Pro In Pro version you may modify this behaviour with **Synchronization** settings.



File

You need to select the file containing the image. The following formats are supported:

- BMP (Windows bitmaps)
- JPG
- PNG

To invoke the file selection dialog box select **Browse** button.

Note: CD+G image format is 288x192.

Images may be of any size and color depth, however if they contain more than 16 colors or are larger than 288 x 192, they will be automatically converted to CD+G format. If you would like to use an image editing software to decrease the color depth and resize the images, make sure you save them as 4-bit BMP file.

Link to file and Insert contents options

By default Karaoke CD+G Creator leaves the images on the hard disk and reads them when needed (**Link to file** option selected). This behaviour reduces the size of PK2 files and allows making changes to the images using image editors (you do not have to visit event again -- just edit the image and re-create CDG file). However if you delete the image file from disk, it will not be available.

If you would like to share your PK2 files select **Insert contents** option. It will cause Karaoke CD+G Creator to include the image in PK2 file, so you may send it over to a friend or delete image files. Note that if image source file is deleted you will not be able to edit it any more.

Keep on screen for N seconds

This setting controls how long will the image be visible before it is erased. Note that painting time (up to 10 seconds for a full screen sized picture) and erasing is not included, so the total time that the picture takes equals to the sum of painting time, display time, and erase time.

Selecting 0 will cause the image to become erased immediately after it is fully painted.

Border color

Choose the color that will surround the image. Note that it is different than Borders color setting in Colors CD+G event, as it refers to the area not taken by the image, and not only to the border of the screen. If you are using image as a background (in **Set Text Area** event) the background color must match the background color of the text.

Display mode and Erase mode

These settings control the way image is painted and erased. By default images are painted from left to right and erased immediately. You may change it by selecting any of the display effects.

Checking the **Reverse** checkbox will cause the effect to run backwards, for example *Left to Right* mode will become to *Right to Left*.

Note that selecting **Fade** and **Simple** as **Display mode** will cause the screen to go blank for several seconds (the image still needs to be painted, and this is done in a way that is not visible, yet still takes time).

Alignment

You may select the position of the picture if it is not full screen sized. Simply select the appropriate rectangle. By default images are centered.

Force scaling

This option will force the image to be scaled to the size defined in **Width** and **Height** boxes. This size cannot be larger than the full screen (288 x 192).

Dithering

If the number of colors in the image is larger than 16, Karaoke CD+G Creator will reduce it. You may select the algorithm that is used to make the image look as good as possible with the lower number of colors. Selecting **none** will disable any dithering. The simplest way to see how each of the algorithms works is to select it and then to click the **Preview** button.

Resizing

This setting controls the way image is scaled if its size is not 288 x 192 (full screen).

Fit will cause the image to be scaled up or down to take as much screen as possible.

Fit if larger (default setting) will scale the image only if it is too large, it will not stretch it.

Crop will not scale the image and will display as much of it as possible.

All resizing modes retain aspect ratio of the image.

Pro *Synchronization (Pro version only)*

By default the image will be displayed immediately after the last word before it is highlighted. It is possible to define the exact time when it should appear (but remember that image needs to fit between the previous and the next word).

You may define the exact time the image should be visible (**From the start of the song**) -- the value in **Display at** box is a position in seconds. You may use **Copy from cursor** button to enter current cursor position into **Display at** box.

You may also define time before the next word is highlighted (**Before the next word**) or after the previous word finishes highlighting (**After the previous word**).

Please remember that the time position refers to the moment image is fully painted. It does not include painting nor erasing time.

Preview

Click this button to see how the picture will look.

Notes

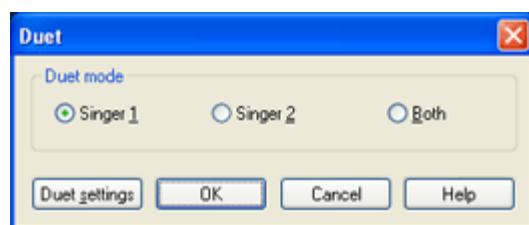
- Images with more colors take longer to paint.
- Inserting image in the middle of the song may use up the time and cause the loss of synchronization

Duet event

Duet event allows to change the current duet mode.

In regular version of Karaoke CD+G Creator duet mode changes the coloring and alignment of the text to visualize the change of a singer.

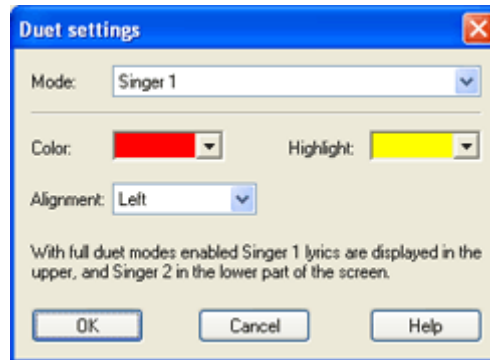
Pro In Pro version with full duet mode enabled duets can be parallel. The upper part of the screen is taken by Singer 1, and the lower by Singer 2. The lyrics for each of the singers are highlighted independently. Please see [Creating duets](#) section for more information.



All words after the event will be colored according to the selected mode. Three duet modes are available:

- Singer 1
- Singer 2
- Both

You may view and change the predefined coloring and alignment assigned to duet modes by clicking **Duet settings** button.



Mode allows to change the duet mode that you would like to modify. Only Singer 1 and Singer 2 modes are available -- for Both Karaoke CD+G Creator uses global CD+G settings for the song (as defined in [CD+G Settings dialog box](#)).

Color and **Highlight** allows you to change the color of the text assigned to the selected mode, while **Alignment** controls the alignment of the text assigned to the selected mode.

Pro In Pro version you are also able to set lines count and vertical alignment for each of duet modes.

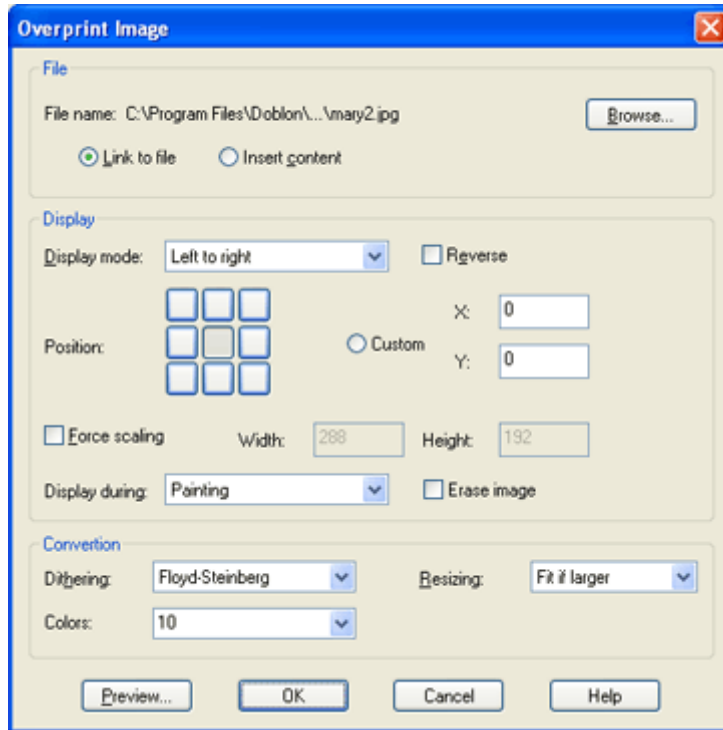
The duet settings are global for the song.

Note: Colors and Text settings flags overwrite the duet settings.

Overprint image

Pro *Note: This event is available in Pro version only.*

This event allows to display the image anywhere on the text. It may also be used to erase a part of the screen.



As you can see the settings are very similar to [Display image](#) event.

File

You need to select the file containing the image. The following formats are supported:

- BMP (Windows bitmaps)
- JPG
- PNG

To invoke the file selection dialog box select **Browse** button.

Note: CD+G image format is 288x192.

Images may be of any size and color depth, however if they contain more than 16 colors or are larger than 288 x 192, they will be automatically converted to CD+G format. If you would like to use an image editing software to decrease the color depth and resize the images, make sure you save them as 4-bit BMP file.

Link to file and Insert contents options

By default Karaoke CD+G Creator leaves the images on the hard disk and reads them when needed (**Link to file** option selected). This behaviour reduces the size of PK2 files and allows making changes to the images using image editors (you do not have to visit event again -- just edit the image and re-create CDG file). However if you delete the image file from disk, it will not be available.

If you would like to share your PK2 files select **Insert contents** option. It will cause Karaoke CD+G Creator to include the image in PK2 file, so you may send it over to a friend or delete image files. Note that if image source file is deleted you will not be able to edit it any more.

Display mode

These settings control the way image is painted. By default images are painted from left to right. You may change it by selecting any of the display effects.

Checking the **Reverse** checkbox will cause the effect to run backwards, for example *Left to Right* mode will become to *Right to Left*.

Position

You may select the position of the picture by selecting the appropriate rectangle.

You may also display the image in any part of the screen. To do this select **Custom** and enter coordinates of left top corner of the image position.

Force scaling

This option will force the image to be scaled to the size defined in **Width** and **Height** boxes. This size cannot be larger than the full screen (288 x 192).

Display during

You may choose whether the image should be displayed after the preceding word is painted, or highlighted.

Erase image

This option will erase the image instead of painting it (used if you have displayed an image in the same place before).

Dithering

If the number of colors in the image is larger than 16, Karaoke CD+G Creator will reduce it. You may select the algorithm that is used to make the image look as good as possible with the lower number of colors. Selecting **none** will disable any dithering. The simplest way to see how each of the algorithms works is to select it and then to click the **Preview** button.

Resizing

This setting controls the way image is scaled if its size is not 288 x 192 (full screen).

Fit will cause the image to be scaled up or down to take as much screen as possible.

Fit if larger (default setting) will scale the image only if it is too large, it will not stretch it.

Crop will not scale the image and will display as much of it as possible.

All resizing modes retain aspect ratio of the image.

Colors

Use this setting to define the number of colors that will be added to the current palette to match the colors in the image. Below are some suggestions how to set this option regarding the types of the usage:

| | |
|---------|--|
| Maximum | Use this setting if you are displaying the image on the clear screen. You may also use it if this is the only image displayed on the current page and you do not change the colors for text |
| 10, 8 | Use this setting for the color-rich images for the songs with changing text colors (or duets) |
| 4 | This is the best setting for small images (stars, tick marks) displayed on screen. Remember that if you want to display the same image more than one you should select this setting for the first image only |

Use current palette Use this setting if you are displaying the image for the second time or if you have already used up many of the palette entries (the total number of available colors is 16)

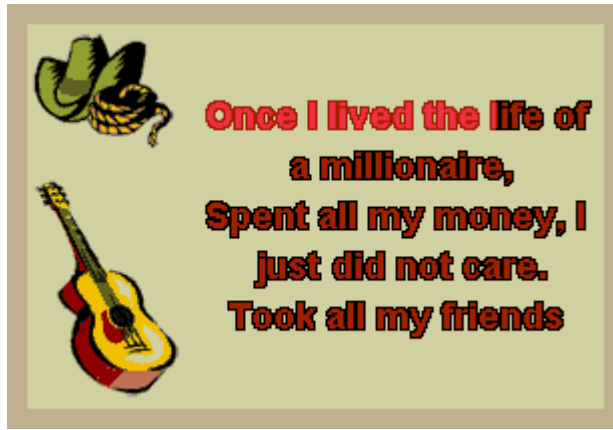
Preview

Click this button to see how the picture will look.

Set Text Area event

Pro *Note: This event is available in Pro version only.*

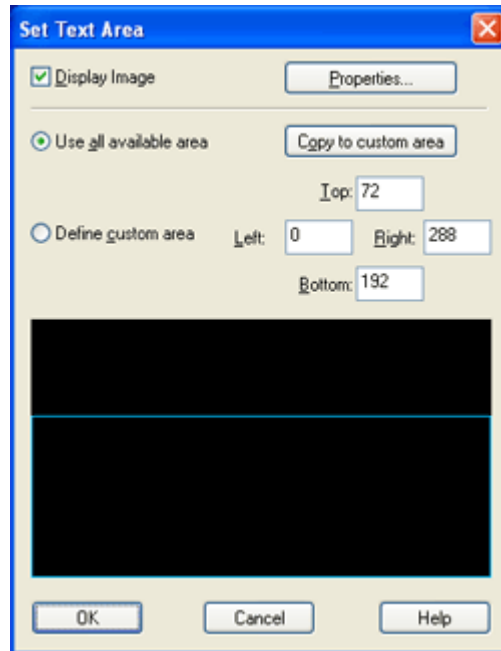
Using this event you may display the image and the text on screen at the same time. It also allows to change the portion of the screen that is used to display the lyrics.



If you choose to display the image, it will be painted according to the selected options and will not be erased. The lyrics will appear at the defined area. Using this setting you may display the banner on the top of the text or an image anywhere on the screen.

Clear screen or **Display image** event resets the text area to the full screen.

*Note: If the selected display mode is other than **Overwrite**, the image will be visible only on the first page.*



Display image

Select the image you would like to appear on screen. You need to select the image file using **Properties** button before **Display Image** checkbox becomes active.

Properties button will open [Display image](#) dialog box, the same as for Display Image event.

Note that you the erase mode will not be used event if you define it, as the image will stay on screen.

Use all available area

Select this option if you want text to use all the screen that is not used by the image.

Copy to custom area

This button will set the custom area dimensions to the area not used by the image.

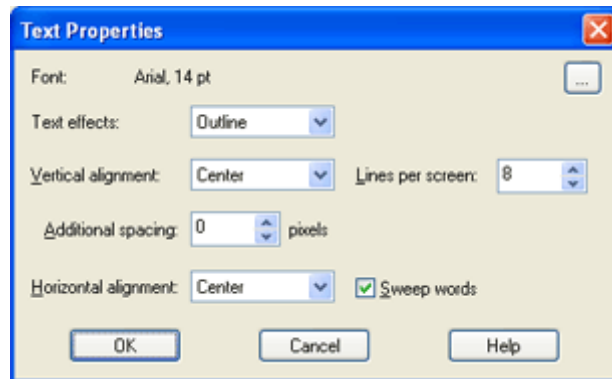
Define custom area

Using this option you may define the rectangle that will contain the lyrics. It may be useful if you want the lyrics to appear in the middle of the picture or simply move the text a little to the right. The full screen has width of 288 and height of 192 pixels.

The custom area is visualized by the blue frame (black area represents full screen). You may modify it by dragging the edges of the frame.

Text Settings event

Text Settings event allows to modify the properties of the text.



Font

This setting specifies which font will be used for the lyrics and how large the letters should be. If you are trading you PK2 files make sure that you use fonts that are installed on the destination computer.

Text Effects

Select the text effect you want to apply. You have the choice of Outline (you may choose the size of the outline), Shadow and Heavy shadow. The color of the text effects can be set in Colors dialog box.

You may enable any of the following text effects:

- None Text effects are disabled
- Outline Text is outlined by a single pixel
- Shadow A one pixel shadow is added to text
- Heavy shadow A two pixel shadow is added to text
- Outline (2-5 pixels) An outline of a selected width is added to the text

The color of the effect is controled separately from the color of the text. By default effects are painted in black.

Note: Enabling text effects decrease the speed of display the text. For the fast-paced songs it is recommended to disable the text effects.

Vertical alignment

Allows to change the placement of the lines of the text. You may select Center, Top, or Bottom which would place the text at the appropriate part of the screen, or choose Space evenly, which makes sure that the first line is at the top, the last at the bottom, and all the spaces between the lines are equal.

Horizontal alignment

This setting controls the way the individual lines of text are placed. You have the choice of Center, Left, and Right.

Lines per screen

Allows to specify the maximum number of lines to be shown. Note that if the font size is too large, the actual number of lines may be lower.

Additional spacing

The number of pixels to insert between the lines.

Sweep words

Uncheck this option if you want to highlight the entire word at once, instead of coloring it gradually as it is sung.

Images

Karaoke CD+G Creator allows to display images anywhere in the song. It also has shortcuts for adding title and credits screen.

The following formats are supported by Karaoke CD+G Creator:

BMP (Windows bitmaps)
JPG
PNG

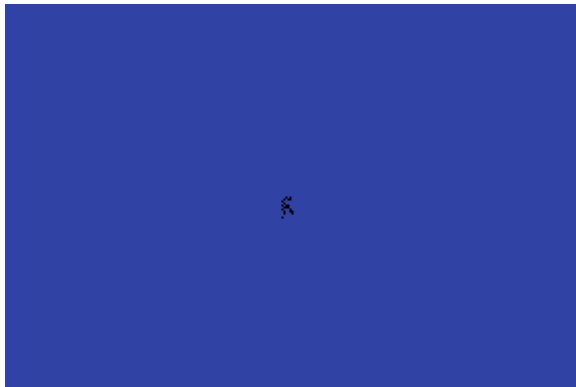
To invoke the file selection dialog box select **Browse** button.

Note: CD+G image format is 288x192.

Images may be of any size and color depth, however if they contain more than 16 colors or are larger than 288 x 192, they will be automatically converted to CD+G format. If you would like to use an image editing software to decrease the color depth and resize the images, make sure you save them as 4-bit BMP file.



Pro version also allows to add images at the side or around of the lyrics.




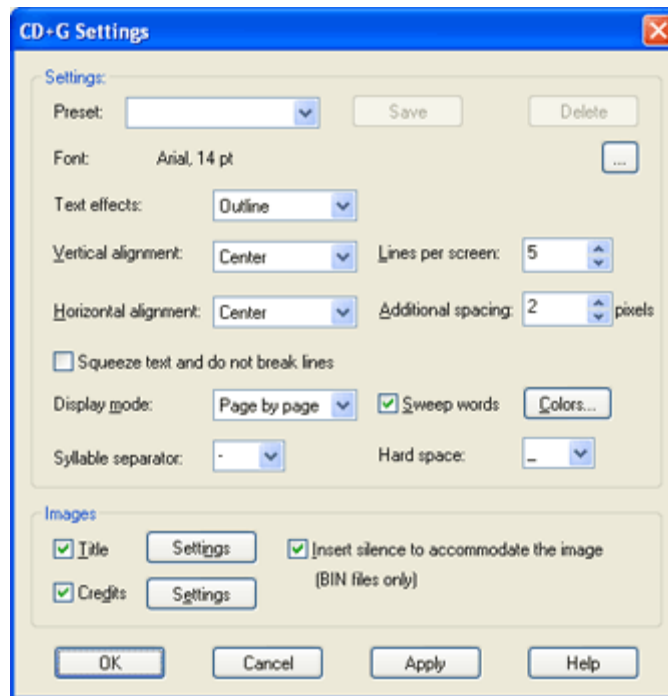
See the following topics for more information:

[Using title and credit images](#)
[Displaying images in the middle of the song](#)
[Displaying image and lyrics at the same time](#)
[Displaying images using styles](#)

Using title and credit images

Title image is displayed at the beginning of the song. Credits image is displayed at the end of the song, when the singing stops.

To define title and credit images open **CD+G Settings** dialog box click **CD+G Settings** button on the toolbar () or select **CD+G Settings** command from **Create** menu.



Images


This group of options allows to select the pictures that are to appear before the song and after the song. By default these pictures are disabled.

To display title image select **Title** checkbox and then click on **Settings** button. **Display image** dialog box will appear. To learn more about it please see [Display Image event](#) section.

The same procedure needs to be applied for credits image.

Checking **Insert silence to accommodate the picture** ensures that the title picture will not interfere with the flow of the song (this option works for BIN files only).

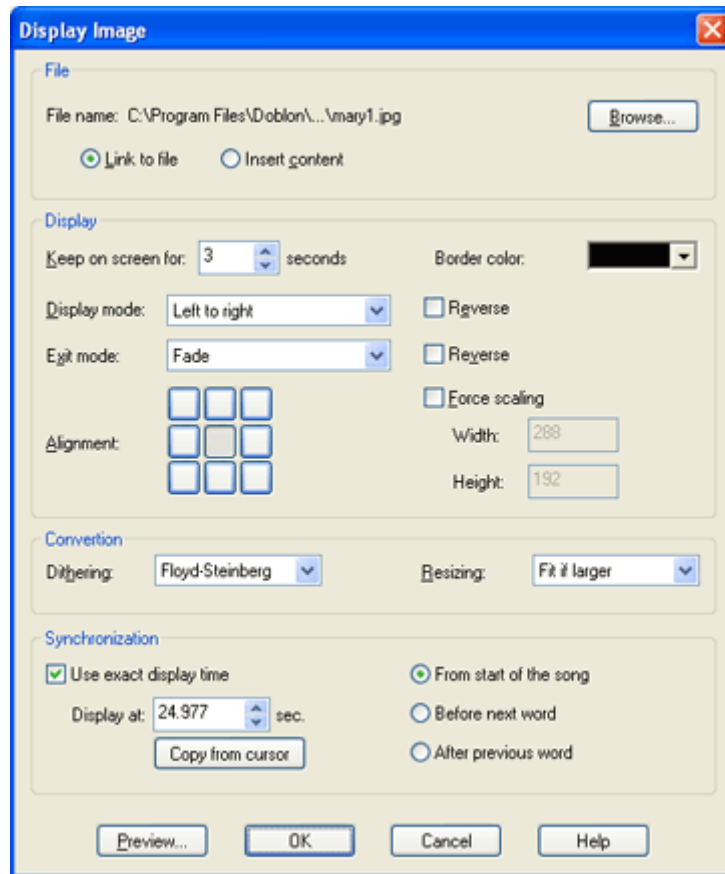
Displaying images in the middle of the song

To display image in the middle of the song place cursor position in the place that image should appear, click **Insert CD+G Event** button on the toolbar (), and then select **Display Image** event type.

Display Image event allows to display the image on the screen. Before the image is displayed the screen is cleared.

The image will be displayed immediately after the last word before it is highlighted.

Pro In Pro version you may modify this behaviour with **Synchronization** settings.



File

You need to select the file containing the image. The following formats are supported:

- BMP (Windows bitmaps)
- JPG
- PNG

To invoke the file selection dialog box select **Browse** button.

Note: CD+G image format is 288x192.

Images may be of any size and color depth, however if they contain more than 16 colors or are larger than 288 x 192, they will be automatically converted to CD+G format. If you would like to use an image editing software to decrease the color depth and resize the images, make sure you save them as 4-bit BMP file.

Link to file and Insert contents options

By default Karaoke CD+G Creator leaves the images on the hard disk and reads them when needed (**Link to file** option selected). This behaviour reduces the size of PK2 files and allows making changes to the images using image editors (you do not have to visit event again -- just edit the image and re-create CDG file). However if you delete the image file from disk, it will not be available.

If you would like to share your PK2 files select **Insert contents** option. It will cause Karaoke CD+G Creator to include the image in PK2 file, so you may send it over to a friend or delete image files. Note that if image source file is deleted you will not be able to edit it any more.

Keep on screen for N seconds

This setting controls how long will the image be visible before it is erased. Note that painting time (up to 10 seconds for a full screen sized picture) and erasing is not included, so the total time that the picture takes equals to the sum of painting time, display time, and erase time.

Selecting 0 will cause the image to become erased immediately after it is fully painted.

Border color

Choose the color that will surround the image. Note that it is different than Borders color setting in Colors CD+G event, as it refers to the area not taken by the image, and not only to the border of the screen. If you are using image as a background (in **Set Text Area** event) the background color must match the background color of the text.

Display mode and Erase mode

These settings control the way image is painted and erased. By default images are painted from left to right and erased immediately. You may change it by selecting any of the display effects.

Checking the **Reverse** checkbox will cause the effect to run backwards, for example *Left to Right* mode will become to *Right to Left*.

Note that selecting **Fade** and **Simple** as **Display mode** will cause the screen to go blank for several seconds (the image still needs to be painted, and this is done in a way that is not visible, yet still takes time).

Alignment

You may select the position of the picture if it is not full screen sized. Simply select the appropriate rectangle. By default images are centered.

Force scaling

This option will force the image to be scaled to the size defined in **Width** and **Height** boxes. This size cannot be larger than the full screen (288 x 192).

Dithering

If the number of colors in the image is larger than 16, Karaoke CD+G Creator will reduce it. You may select the algorithm that is used to make the image look as good as possible with the lower number of colors. Selecting **none** will disable any dithering. The simplest way to see how each of the algorithms works is to select it and then to click the **Preview** button.

Resizing

This setting controls the way image is scaled if its size is not 288 x 192 (full screen).

Fit will cause the image to be scaled up or down to take as much screen as possible.

Fit if larger (default setting) will scale the image only if it is too large, it will not stretch it.

Crop will not scale the image and will display as much of it as possible.

All resizing modes retain aspect ratio of the image.

Synchronization (Pro version only)

By default the image will be displayed immediately after the last word before it is highlighted. It is possible

to define the exact time when it should appear (but remember that image needs to fit between the previous and the next word).

You may define the exact time the image should be visible (**From the start of the song**) -- the value in **Display at** box is a position in seconds. You may use **Copy from cursor** button to enter current cursor position into **Display at** box.

You may also define time before the next word is highlighted (**Before the next word**) or after the previous word finishes highlighting (**After the previous word**).

Please remember that the time position refers to the moment image is fully painted. It does not include painting nor erasing time.


Preview

Click this button to see how the picture will look.

Notes

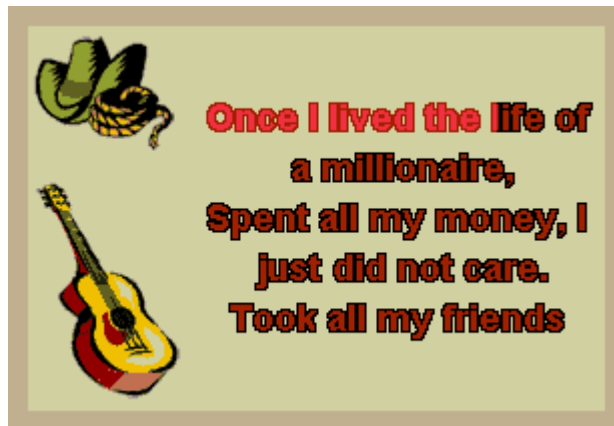
- Images with more colors take longer to paint.
- Inserting image in the middle of the song may use up the time and cause the loss of synchronization

Displaying image and lyrics at the same time

To display image at the side or around the lyrics use **Set Text Area** event. To do this position lyrics editor cursor in the place that image should be displayed, click **Insert CD+G Event** button on the toolbar (), and then select **Set Text Area** event type.

Pro Note: This event is available in Pro version only.

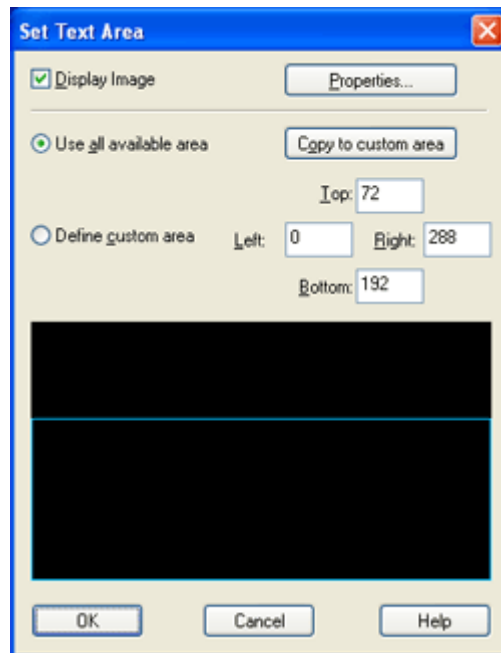
Using this event you may display the image and the text on screen at the same time. It also allows to change the portion of the screen that is used to display the lyrics.



If you choose to display the image, it will be painted according to the selected options and will not be erased. The lyrics will appear at the defined area. Using this setting you may display the banner on the top of the text or an image anywhere on the screen.

Clear screen or **Display image** event resets the text area to the full screen.

Note: If the selected display mode is other than **Overwrite**, the image will be visible only on the first page.



Display image

Select the image you would like to appear on screen. You need to select the image file using **Properties** button before **Display Image** checkbox becomes active.

Properties button will open [Display image](#) dialog box, the same as for Display Image event.

Note that you the erase mode will not be used event if you define it, as the image will stay on screen.

Use all available area

Select this option if you want text to use all the screen that is not used by the image.

Copy to custom area

This button will set the custom area dimensions to the area not used by the image.

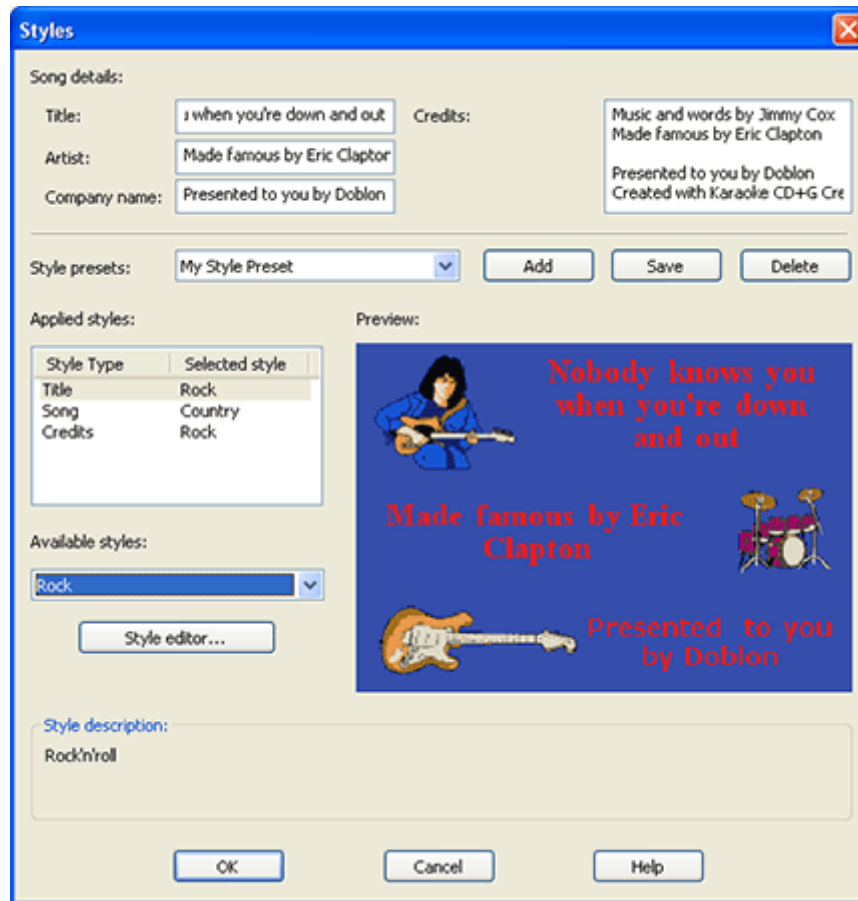
Define custom area

Using this option you may define the rectangle that will contain the lyrics. It may be useful if you want the lyrics to appear in the middle of the picture or simply move the text a little to the right. The full screen has width of 288 and height of 192 pixels.

The custom area is visualized by the blue frame (black area represents full screen). You may modify it by dragging the edges of the frame.

Displaying images using styles

To apply a predefined visual style to your song click **Styles** button on the toolbar () or select **Styles** command from **Create** menu.



Song details section of the dialog box allows you to enter title of the song, artist name, and text that will be displayed as your company information (probably something like *Presented to you by DOBLON*). Credits are displayed after the song is finished.

***Tip:** To force a new line in Title, Artist, or Company name fields, use ^ character.*

What is style?

Karaoke CD+G Creator allows to set styles for:

- **Title:** image displayed before the song
- **Credits:** image displayed after the song is finished
- **Song:** colors, text formatting, page layout, and image (in Pro version only) of the lyrics

Each of this styles can be applied individually, or it is possible to use presets.

Style preset combo box allows to select one of predefined templates. It will change all styles in **Applied styles**. You may store your combination of Title, Song, and Credit styles using **Add** button. To save changed combination use **Save** button. **Delete** button removes your preset from the list.

Applied styles lists styles used for each of the sections of the song. To change the style select it in **Applied styles** list and then choose the new style from **Available styles** combo. Selecting **(Unused)** will disable the style.

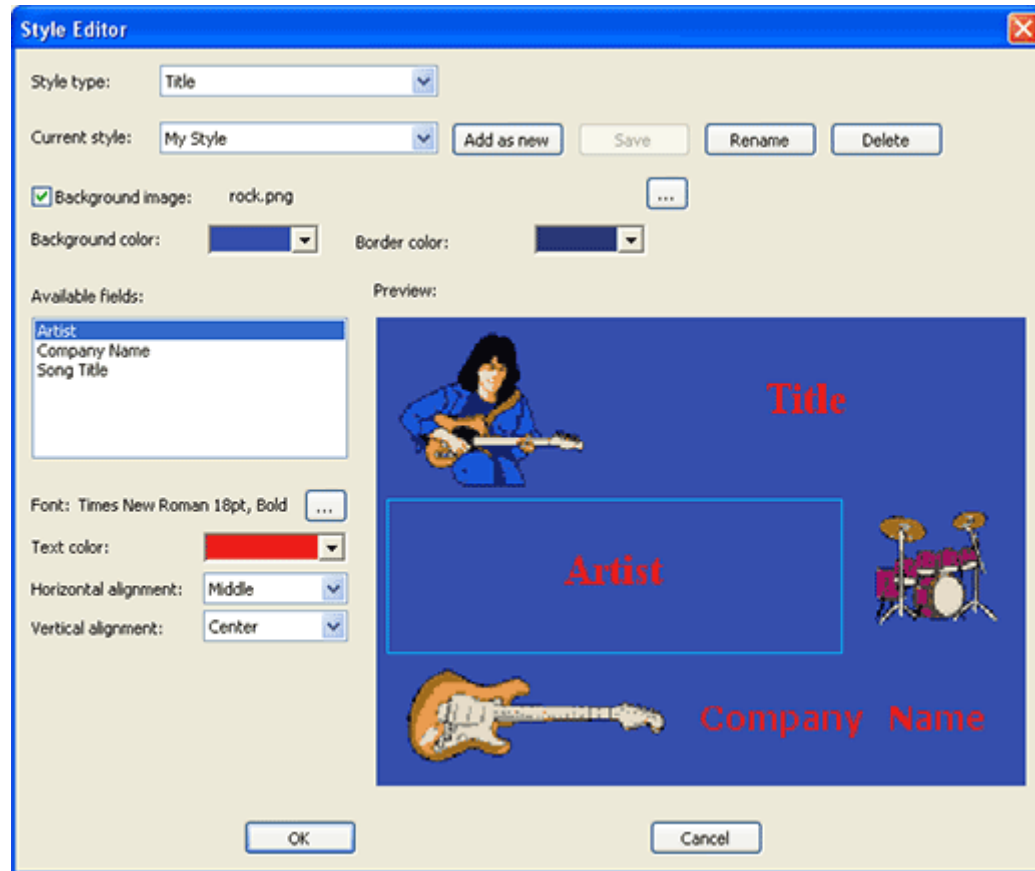
Style editor button starts [Style Editor dialog box](#) which allows you to create your own styles.

Preview window displays the preview of the style selected in **Applied styles** list.

Selected styles will be applied to the song when you select **OK** button.

Style Editor

Style Editor allows you to create your own visual styles.



Style editing is done in visual manner. The first step is to select the style type in **Style type** combo box (you may create Title, Song, and Credit styles). Once you select the style type **Current style** combo box is filled with available styles of the selected type.

There are two types of styles -- system (predefined) styles and user-defined styles. Predefined styles have * in front of their names and cannot be altered.

Once you select a style from the **Current style** combo box the style preview will be displayed in **Preview** window. Also fields available for the selected style type will be displayed on **Available styles** list. Each of the style types has different fields.

For Title and Credit styles you may change the background image, colors, and define the position and properties of text fields. To change the position of the text field select it on the **Available fields** list. The field will be displayed as a light blue rectangle on the preview area. Use mouse to change the position. You may also change the font, color, and alignment of the text fields.

Song style does not have a text field, but has lyrics field. You may define the properties of the lyrics using **Lyrics properties** button.

Pro *Note: The next paragraph applies to Pro version only.*

When using background image for text style you need to remember that lyrics cannot overlap with any part of graphics. Also please make sure that the background color selected in **Background color** exactly matches the lyrics area color. If this is not the case the lyrics will not be displayed properly.

Note: We recommend that you prepare your images so they are of 288x192 resolution and have no more than 14 colors for title and credits, and 8 colors for lyrics background.

Import lyrics from CD+G file

One of the most exciting features of Karaoke CD+G Creator is an ability to import existing CD+G songs. This allows to re-edit commercial editions of karaoke songs with endless possibilities -- use this to change font and images, fix broken characters, change lyrics or create parodies. Karaoke CD+G Creator imports both lyrics and synchronization, so the most cumbersome part of the song creation is already done, leaving you all the fun.

To import CD+G song select **Import CD+G File** command from **File** menu or click **Import CD+G File** button on the toolbar.

First you need to select file containing CD+G songs. Two file formats are supported -- CDG BIN file. If you use CDG file, Karaoke CD+G Creator will automatically look for MP3 file of the same name and use it as a soundtrack.

If **Insert 'Clear Screen' events automatically** is checked, Karaoke CD+G Creator will detect when entire screen is erased in CD+G song and will insert 'Clear Screen' events at the same places in the imported song. This help to maintain the text flow for page-by-page songs (SoundChoice songs give very good results with this option enabled).

Import process takes a while (up to half a minute on a slower computer). Once it is completed you will see the imported lyrics in the lyrics editor. Please check for spelling mistakes, as some of the characters may be recognized incorrectly.

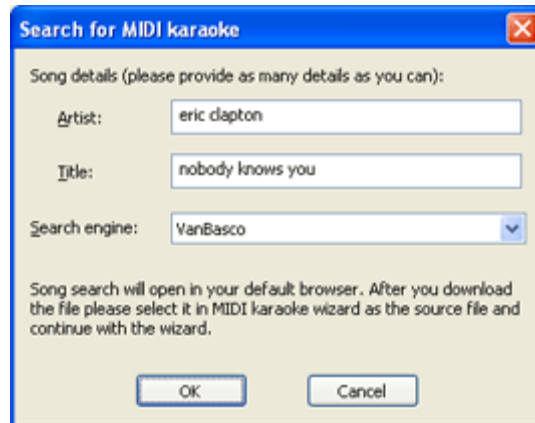
NOTE:

- 1. Not every song can be imported. Duets are not supported, also songs using scrolling will not import.*
 - 2. Optical character recognition (OCR) is not perfect and may sometimes make an error. Please check the lyrics for spelling mistakes.*
-

Searching for MIDI karaoke on the web

Internet is full of MIDI karaoke files and Karaoke CD+G Creator provides a simple tool to help you find them.

To start MIDI karaoke web search select **Search the web for MIDI Karaoke** command from **File** menu.



To start the search you need to provide artist name and the title of the song. Note that the song title does not have to be complete -- you may enter just first couple of words.

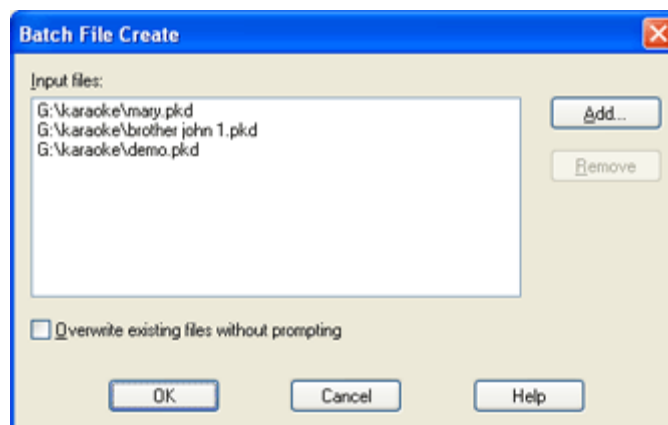
Search engine combo allows you to change the place that you will use to search for files. You may try changing search engine if you are not getting the results you need.

Clicking on **OK** button will open the search in your web browser. Once you find the file save it to your hard disc -- you may use it as a source to create CD+G song with [Import MIDI Karaoke Wizard](#).

Disclaimer: Doblon does not provide MIDI karaoke files. They are provided by various websites that are not affiliated with us.

Batch file create

Batch file create command from **Create** menu allows to write multiple CDG files in one session.



Use **Add** button to add PK2 files to the **Input files** list. **Overwrite existing files without prompting** will disable warning messages that might stop the batch process.

Clicking **OK** will start processing. Please note that it may take a substantial amount of time if you add many files to the list.

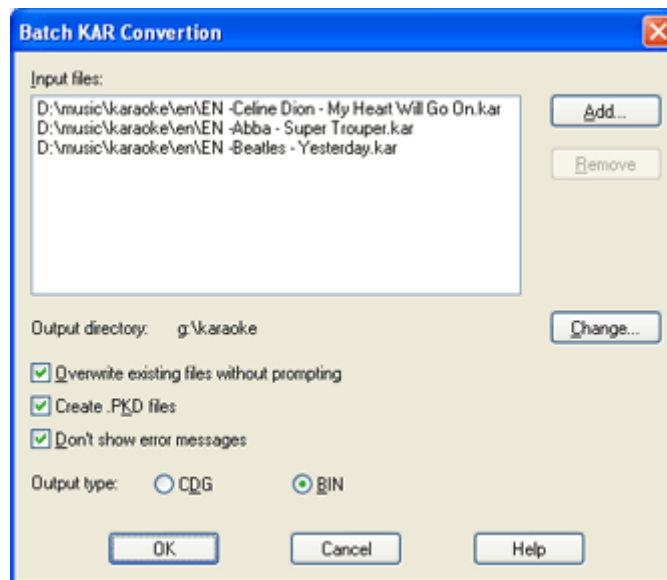
Batch MIDI import

Sometimes it is necessary to convert several MIDI Karaoke songs into CDGs. This process cannot be fully automated, however Karaoke CD+G Creator gives you the possibility to convert a batch of KAR songs without any user intervention. These songs can be opened and edited later to make sure they play

correctly. Batch conversion saves time -- you do not have to select the songs and wait till they are recorded as WAV files, instead you choose the songs and let Karaoke CD+G Creator convert them all in a single process.

Important: Make sure that your MIDI files are converted correctly using [Import MIDI Karaoke Wizard](#) before using this feature.

To convert a batch of KAR songs select **Batch MIDI Karaoke Convert** command from **File** menu. **Batch KAR Conversion** dialog box will appear.



Add the files to convert using **Add** button. Note that you may add several files at once.

If you would like to remove any of the files, use **Remove** button.

Output directory points to the directory that will contain all WAV, PK2 and CDG/BIN files created during the conversion.

If you do not want to be warned that files are getting overwritten, check **Overwrite existing files without prompting**.

Checking **Create .PK2 files** option makes sure that every song is saved in .PK2 document. This option makes possible to open and edit converted files afterwards.

Selecting **Don't show error messages** ensures uninterrupted processing, but may result in bad results if some of MIDI files contain errors.

Output type defines if the output CDG song is saved into CDG or BIN file. For more information about CDG and BIN files please see Writing CD+G files.

All CDG tracks are created using the current settings. You may modify it using [CD+G Settings](#) command from **Create** menu.

Getting results

Advanced lyrics import

Pro *Note: This feature is available in Pro version only.*

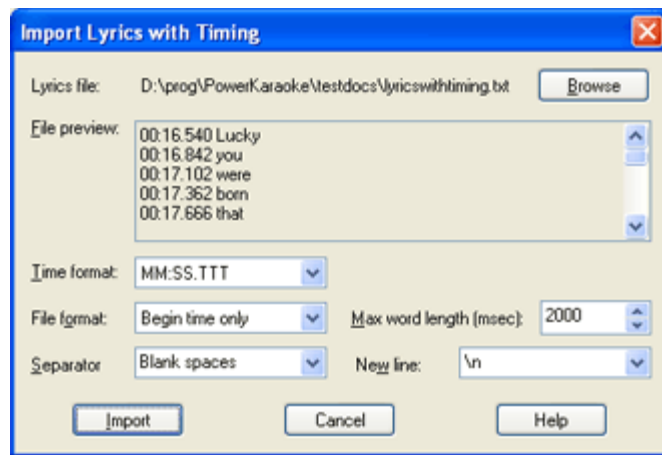
Import lyrics with timing command from **Toolbox** menu allows to import the lyrics stored in a text file along with the synchronization information.

The sample text file might look like this:

```
00:16.540 00:16.840 On
00:16.842 00:17.100 a
00:17.102 00:17.360 dark
00:17.362 00:17.660 desert
00:17.666 00:17.800 highway\n
00:19.010 00:19.300 Cool
00:19.429 00:19.521 wind
```

It contains the start and the end time of a word. The end of the line is marked by \n symbol.

After the import is complete you may review the results by playing the file or inspecting time labels in the soundtrack panel.



Lyrics file

Select the text file containing the lyrics.

File preview

Here you can see the contents of the selected file.

Time format

Choose the appropriate time format. Following formats can be used:

| | |
|--------------|---------------------------|
| MM:SS.TTT | minute:second.millisecond |
| milliseconds | milliseconds only |
| SS.TTT | second.millisecond |

File format

Select the format of the file. Following settings are available:

Begin time only

File contains only the start time of the word

Begin and end times

File contains both the start and the end time of the word

Separator

Choose the separator between start time, end time, and text. The defaults are any space or tab characters.

Max word length

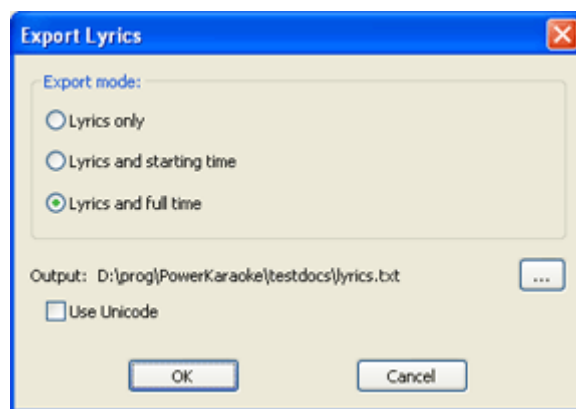
If no end time for the word is given, PowerKaraoke assumes that the ending time is the beginning time of the next word, but word duration cannot be longer than value specified by this option.

New line

Enter the text string that is used to mark a new line of text. By default it is '\n'.

Exporting lyrics

You may export lyrics from Karaoke CD+G Creator lyrics editor to the text file. To do this select **Export lyrics** command from **Toolbox** menu.



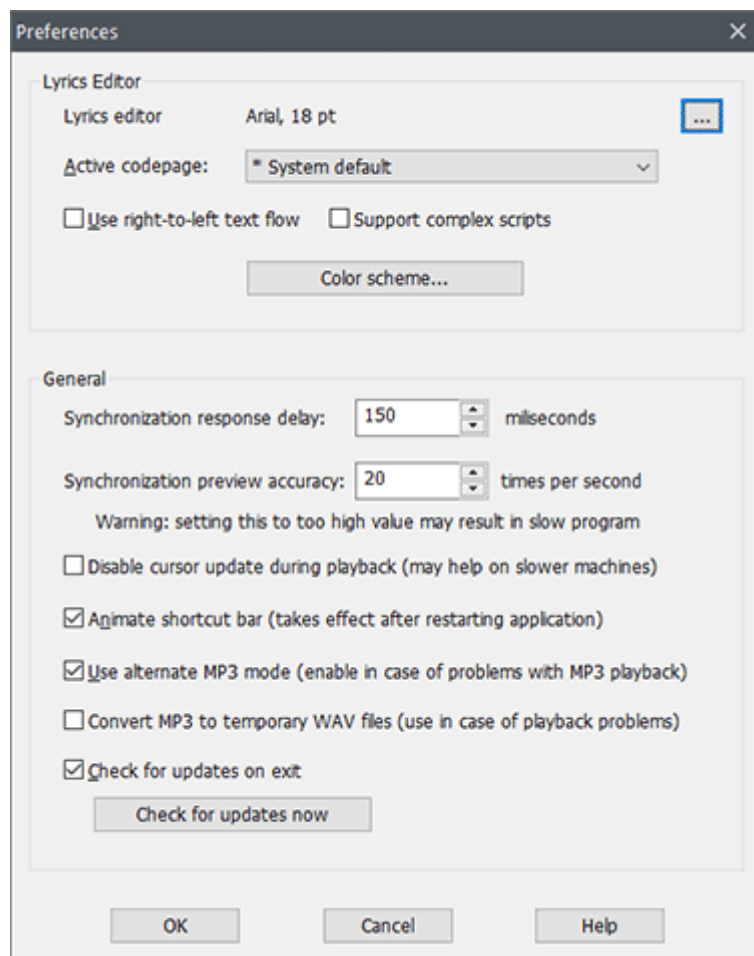
Lyrics can be exported as a plain text (**Lyrics only** mode), they can contain starting time for the words (**Lyrics and starting time** mode), or both starting and ending time (**Lyrics and full time** mode).

To write to Unicode text file make sure to select **Use Unicode** checkbox.

Getting results

Adjusting program settings

To adjust Karaoke CD+G Creator settings select **Preferences** from **File** menu.



General settings

Synchronization response delay

For an average person it takes approximately 150 milliseconds to react to a sound stimulus. To compensate for this 'response delay' synchronization labels placed with space bar during synchronization process are placed in a 150 ms time shift.

Synchronization preview accuracy

This setting determines how often the lyrics highlighting is refreshed during playback.

Animate shortcut bar

This option allows to disable animation in the shortcut bar. You need to restart Karaoke CD+G Creator for the change to take effect.

Check for updates on exit

Karaoke CD+G Creator can prompt to check if updates are available -- you may disable this feature here.

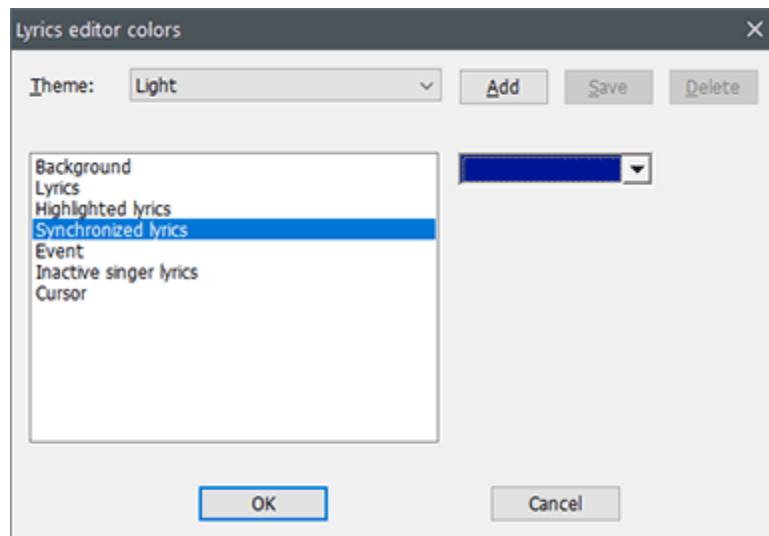
Lyrics Editor

Pro Note: This option is available in Pro version only.

Here you can set font and codepage used by the lyrics editor, and also enable right-to-left text flow. It can be useful with Far Eastern (Chinese, Japanese, Korean) or right-to-left languages (Arabic, Hebrew, Farsi) languages.

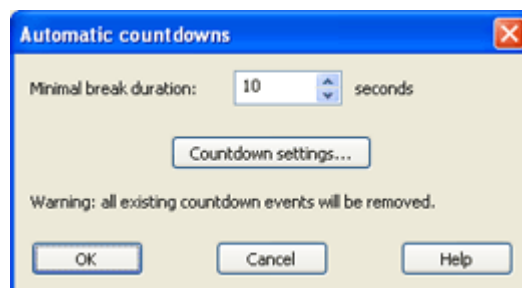
Color scheme button opens **Lyrics editor colors** window where you can edit colors used in lyrics editor. You may use one of the predefined schemes or define and save your own.

Pro Note: This option is available in Pro version only.



Automatic countdowns

Automatic countdowns command from **Edit** menu allows to insert [countdown event](#) after every instrumental break of the specified length.



Minimal break duration is a number of seconds of instrumental break after which countdown event will be inserted.

Countdown settings allows to define settings for countdown events that will be inserted.

Automatic Clear Screen insertion

Insert 'Clear Screen' at optimal positions command from **Edit** menu allows to insert **Clear Screen** events automatically. Karaoke CD+G Creator analyzes the flow of the text and inserts events in such way, that pages are changed during the longest breaks between words. This ensures that there is enough time to display lyrics of the new page.

This command works for songs with two or more lines per page.

BIN/CDG converting functions

BIN to CDG+WAV / CDG to BIN

To convert between various formats of karaoke files we recommend [Power CD+G Burner 2](#). BIN to CDG+WAV and vice versa converting can be done in trial version of the software without the need of purchasing it.

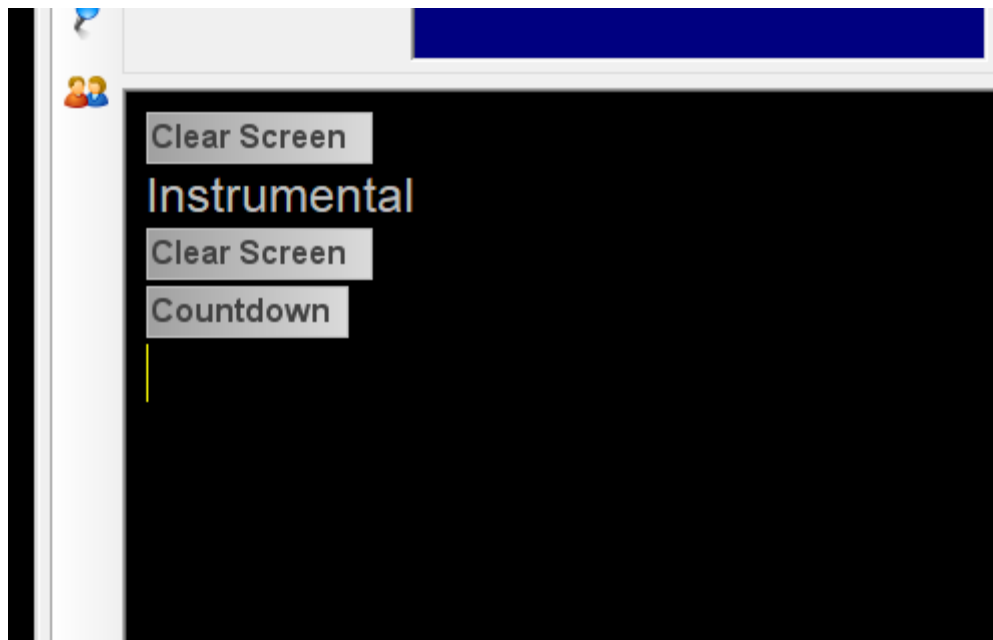
Text Snippets

Often you may want to insert the same elements of the song multiple times into different songs. It may be your custom title page, instrumental break or a way you like to format song's chorus. You may use **Text snippets** to automate such tasks.

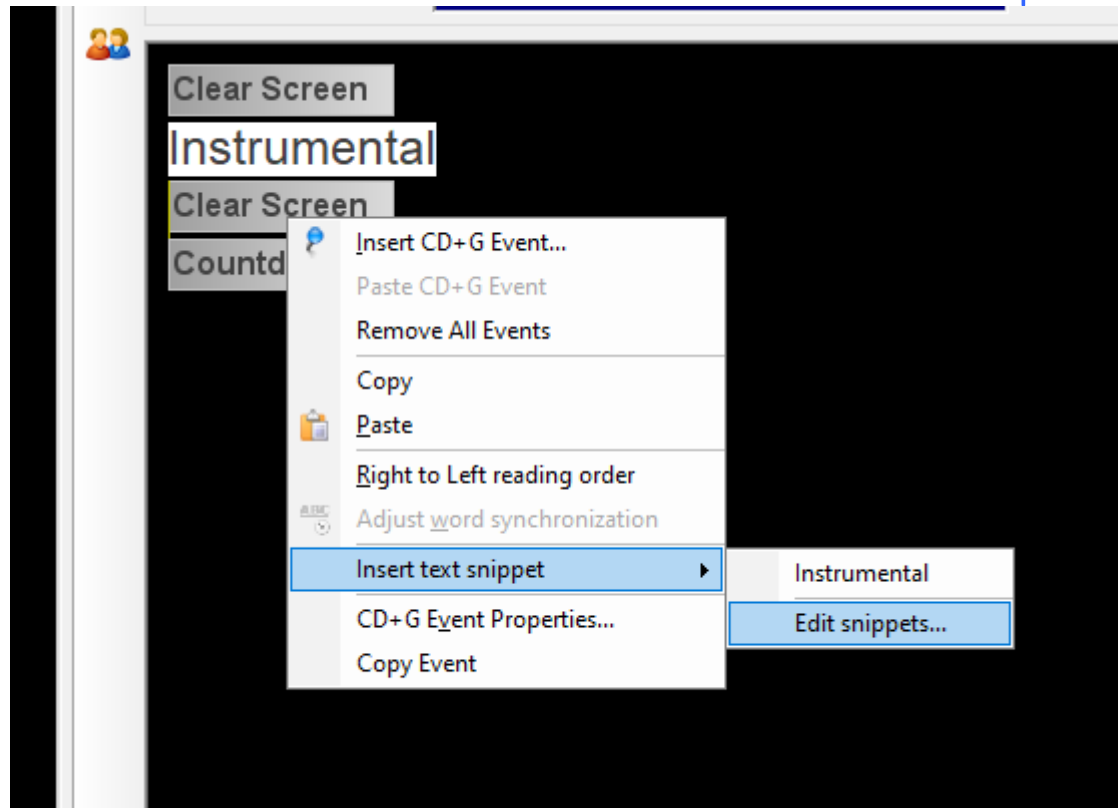
Text snippet is a part of a song (lyrics and events) that can be reused. You may define as many text snippets as you like, you can also move them between computers.

To define a text snippet:

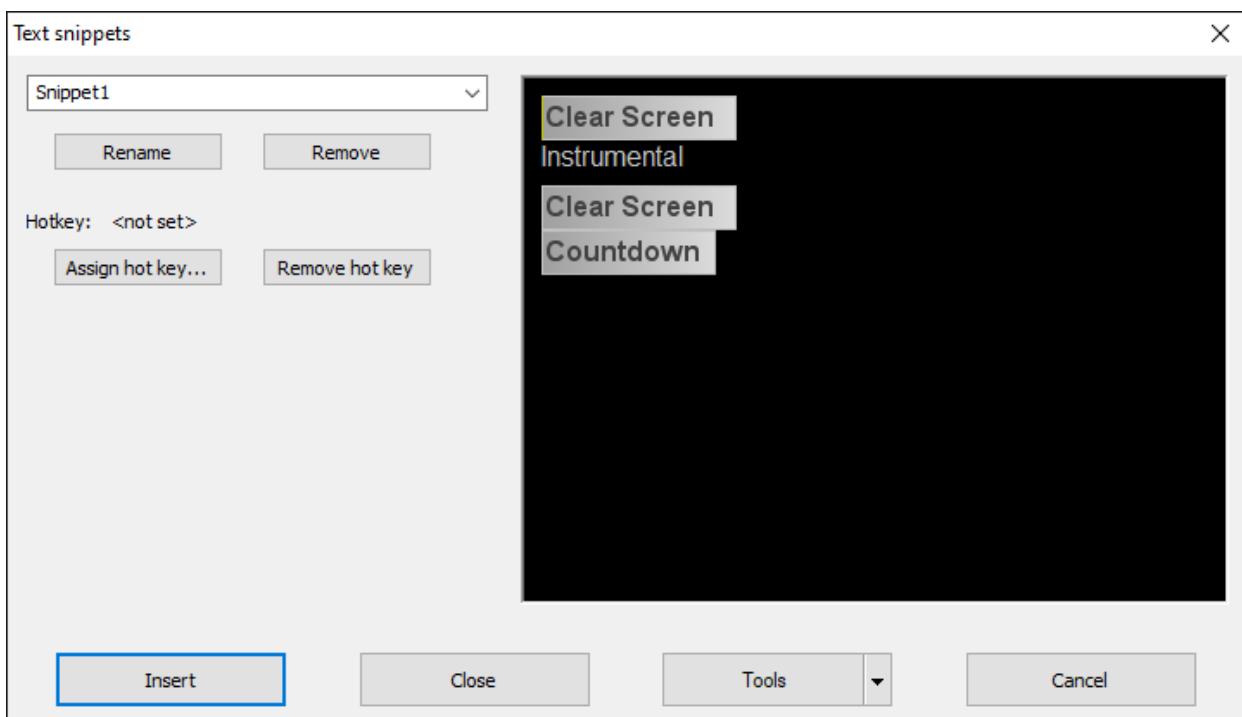
1. Select the text you would like to save as a snippet



2. Choose **Text snippets** from **Edit** window or right-click the selected text, choose **Insert text snippet** from a drop-down menu and then choose **Edit snippets** from a submenu



3. **Text Snippets** window will open. You will see the text you have selected in the Preview field. Your snippet will be auto-named (you may change the name of the snippet by typing the new name in the name field and then clicking **Rename** button)



4. You may switch between snippets by selecting them from the drop-down list. You may also remove currently selected snippet using **Remove** button
5. If you would like to insert a snippet using keyboard, you may define the hotkey for it. To do this use **Assign hot key** button. You may use combination of alphanumeric keys with SHIFT, ALT and CTRL.
6. Selecting **Close** will save your snippet collection. **Cancel** will abandon the changes.

To insert a text snippet:

Position the cursor in the place you would like to insert the snippet and select **Text snippets** from **Edit** menu, choose the snippet to insert and click **Insert**

or

Right-click with your mouse and choose the snippet from **Insert text snippet** submenu

or

Use the hotkey defined for the snippet

To copy snippets to another computer:

Choose **Export** from **Tools** menu in **Text snippets** window. You will be able to choose a location of the file. All snippets will be saved. Move this file to a destination computer and choose **Import** there. You will be presented an option of replacing the snippets or appending them (with renaming if necessary).

[File](#)
[Edit](#)
[View](#)
[Play](#)
[Synchronize](#)
[Create](#)
[Toolbox](#)
[Help](#)

File

[New Song Wizard](#) PowerWizard will help you to create your first CD+G karaoke song with Karaoke CD+G Creator

New Allows to start work on a new song

Open Opens previously saved PK2 document

Save Saves current song to PK2 file

Save As Saves current song to PK2 file under a new name

Save As PKD File Allows to save the file in PKD format compatible with Power Video Karaoke

[Import MIDI Karaoke Wizard](#) Import MIDI Karaoke Wizard will assist you in process of converting MIDI karaoke to CD+G

[Batch MIDI](#) Convert a batch of KAR songs at once

[Karaoke Convert](#)


[Search the web for MIDI Karaoke](#) Internet is full of MIDI karaoke files and Karaoke CD+G Creator provides a simple tool to help you find them

Load Soundtrack Loads the soundtrack for the song

[Import lyrics from a text file](#) Loads a content of a text file into the lyrics editor

| | |
|--|---|
| Import lyrics from MIDI Karaoke file | MIDI Karaoke files contain lyrics already synchronized with music. Use this command to import them. |
| Search the web for lyrics | Lyrics for most of the songs can be found on the internet. Karaoke CD+G Creator contains a helper tool that will run the search for lyrics in your web browser. |
| Preferences | Allows to adjust various Karaoke CD+G Creator settings |

Edit

| | |
|---|---|
| Undo | Reverts last edit |
| Redo | Redos the previously undone action |
| Insert CD+G Event | Allows to insert CD+G event |
| Remove All Events | Removes all CD+G events from the song |
| Shift labels | Allows to move all of synchronization labels in the song |
| Paste lyrics | Use this command to paste lyrics from the clipboard into the lyrics editor |
|  Duet Wizard | Duet Wizard allows to assign portions of the lyrics to each of the singers |
| Automatic countdowns | Allows to insert countdown events after every long instrumental part |
| Insert 'Clear Screen' at optimal positions | Analyzes the song and inserts Clear Screen events in such way that page flow is optimal |
| Convert lyrics | Converts the lyrics in the lyrics editor to the UPPERCASE, lowercase, Title Case, and Sentence case |

View

| | |
|------------------------------|--|
| Main toolbar | Shows and hides the main toolbar |
| Status bar | Shows and hides the status bar |
| Shortcut bar | Shows and hides the shortcut bar |
| CD+G Preview | Shows and hides CD+G Preview in the lyrics editor panel |
| Soundtrack information | Shows and hides the soundtrack information in the soundtrack panel |
| Reset toolbars | Reverts the original toolbar placement |
| Small icons | Uses small icons on the toolbars |


Play

| | | |
|--------|--------|---|
| Start | Ctrl+1 | Start the playback from current cursor position |
| Pause | Ctrl+2 | Pauses the playback and resumes it |
| Stop | Ctrl+3 | Stops the playback. Cursor stays at the last played position. |
| Rewind | Ctrl+4 | Moves the playback position 10 seconds backwards |

| | | |
|--------------------------|--------|---|
| Forward | Ctrl+5 | Moves the playback position 10 seconds forward |
| Playback speed | | Allows to change the playback speed |
| Play from start | Ctrl+6 | Moves the cursor to the start of the file and starts the playback |
| Play current word | Ctrl+7 | Plays the current word (starts 1 second before and ends 1 second after) |
| Play current word (loop) | Ctrl+8 | Plays the current word in loop |

Synchronize


| | |
|--|---|
| Synchronize entire song | Synchronizes the song from start |
| Continue synchronizing | Continues the synchronization from the last synchronized word |
| Synchronize from cursor | Synchronizes from the current cursor position |
| Synchronize current line | Re-synchronizes the current line |
| Adjust word synchronization | Allows to adjust the synchronization for the current line |
| Highlight lyrics during playback | Displays word highlighting during playback |

| | |
|---|--------------------------------|
|  Enable full duet mode | Allows to enter full duet mode |
|---|--------------------------------|

Create

| | |
|---------------------------------------|---|
| Create CD+G File | Writes CD+G file to the disc |
| CD+G Settings | Allows to adjust CD+G settings |
| Apply style | Allows to apply style to the song |
| Run Power CD+G Player | Plays recently created CDG file |
| Batch file create | Allows to write multiple CDG files in one session |

Toolbox

| | |
|---|--|
| Vocal Remover | Runs Power Vocal Remover |
|  Import lyrics with timing | Allows to import the lyrics stored in a text file along with the synchronization information |
| Export lyrics | Export lyrics from Karaoke CD+G Creator lyrics editor to the text file |

Help

| | |
|---|--|
| Help topics | Displays the online help |
| Quick Start | Displays the tutorial |
| Tip of the day | Displays the dialog box with simple tips on using Karaoke CD+G Creator |
| Start evaluation period | Allows to start 14-day evaluation period.Requires internet connection. |
| Unlock | Allows to unlock the full version of Karaoke CD+G Creator with the unlock code purchased at PowerKaraoke website |

About Karaoke CD+G Creator Displays program information

Karaoke CD+G Creator comes on two versions - regular (Karaoke CD+G Creator) and Pro (Karaoke CD+G Creator Pro).

Pro version contains some additional features that make it ideal choice for karaoke professionals.

Karaoke CD+G Creator version comparison chart

| Feature | Karaoke CD+G Creator | Karaoke CD+G Creator Pro <small>Pro</small> |
|--|----------------------|---|
| General | | |
| Create CD+G Songs from scratch | X | X |
| Use PowerWizard to create songs | X | X |
| Load and save songs | X | X |
| Lyrics | | |
| Edit lyrics | X | X |
| Right-to-left and Far East language support | | X |
| Import lyrics from text file or MIDI karaoke | X | X |
| Search for lyrics on the internet | X | X |
| Advanced lyrics import | | X |
| Lyrics export | X | X |
| Soundtrack | | |
| Use MP3 or WAV files as soundtracks | X | X |
| Remove vocals with Power Vocal Remover | X | X |
| View soundtrack graph | X | X |
| Synchronization | | |
| Synchronize lyrics to the music | X | X |
| Decrease playback speed for better synchronization | X | X |
| Adjust synchronization with labels and buttons | X | X |
| Images | | |
| Display title image | X | X |
| Display credits image | X | X |
| Use image display and erase effects | X | X |
| Display image in the middle of the song | X | X |
| Display image together with lyrics | | X |
| Display images anywhere on the lyrics screen | | X |
| Synchronize image display time | | X |
| Use title and credit styles | X | X |
| Use song styles with images | | X |
| CD+G options | | |
| Create BIN files to record to CD+G disc | X | X |
| Create CDG files to play on your computer | X | X |
| Change font, colors, alignment, and number of lines per screen | X | X |
| Use page-by-page lyrics display | X | X |

| | | |
|--|---|---|
| Use overwrite lyrics display | | X |
| Use scrolled lyrics display | | X |
| Squeeze text to keep lines from breaking | X | X |
| Use setting presets | X | X |
| Fast settings preview | X | X |
| Duets | | |
| Use simple color changes for duets | X | X |
| Split screen duet mode | | X |
| Concurrent singer highlighting | | X |
| Advanced duet synchronization | | X |
| Duet Wizard | | X |
| Other | | |
| Automatic countdowns | X | X |
| MIDI web search | X | X |
| Batch processing | | X |
| Power CD+G Player | X | X |
| BIN/CDG converter | X | X |

How do I unlock Karaoke CD+G Creator?

To unlock Karaoke CD+G Creator you need to purchase the unlock code from [PowerKaraoke website](#). The unlock code will be delivered via email. Once you have it select **Unlock** command from Help menu.

You will have to provide your name, email address used to purchase the unlock code, and the unlock code itself. If the unlock code is accepted all limitations will be removed and you will see your name in the About dialog box.

How do I evaluate Karaoke CD+G Creator?

Karaoke CD+G Creator provides the 14-day evaluation mode, during which you will be able to use all program functions. To use it select **Start evaluation period** command from **Help** menu. Starting evaluation period requires internet connection.

What are the limitation of the trial version

Unregistered version of Karaoke CD+G Creator has the following limitations:

- You are not able to save PK2 files (you may create BIN files though)
- Vocal remove will remove vocals from first minute of the song
- After first two pages of the lyrics your words will be replaced with Karaoke CD+G Creator

Index

B

batch processing 65
bitmaps 46, 57

C

cd+g events 43
CD+G settings 33
Clear Screen event 44
colors 46, 57
Colors event 45
Countdown event 45
create BIN 30
create CD+G 30
create cdg 30
create song 2
credit image 56

D

demo 77
Display Image event 46, 57
dithering 46, 57
Duet event 49
duet settings 42
Duet Wizard 41
duets 15, 39

E

edit synchronization 20, 28, 29
evaluate 77
evaluation 77
events 43
export 68

G

getting started 2

I

images 46, 56, 57, 60, 61
import 12, 65, 67
import KAR 12
import lyrics 24, 25
import MIDI 12

K

kar 12, 64, 65

L

labels 20
lyrics 24, 67, 68
lyrics editor 23

M

main window 19
midi 12, 65
midi karaoke 64
modify synchronization 20, 28, 29

O

Overprint Image event 50

P

paste lyrics 25
play 27
play cdg 2, 37
playback 27
playback speed 27
Power CD+G Player 2, 37
Power Vocal Remover 38
PowerWizard 2
preferences 69
preview 31

R

remove vocals 38

S

search 64
search for lyrics 26
Set Text Area event 53, 60
settings 33, 69
shortcut bar 23
soundtrack 20, 26
style 31
styles 31, 61

synchronize 20, 27, 28
Index
synchronizing 20, 27, 28
synchronizing duets 42

T

text 24, 67
Text Settings event 55
title image 56
tutorial 1, 2

U

unlock 77

V

vocal remover 38
vocals 38

W

welcome 1
what's new 37
write 2, 36